

bs-19732R**[Primary Antibody]****RASA4 Rabbit pAb****BioSS**
ANTIBODIES

www.bioss.com.cn

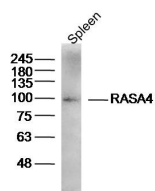
sales@bioss.com.cn

techsupport@bioss.com.cn

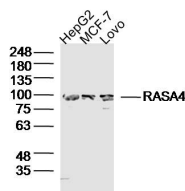
400-901-9800

— DATASHEET —

Host: Rabbit	Isotype: IgG	Applications: WB (1:500-2000)
Clonality: Polyclonal		
GeneID: 10156	SWISS: O43374	
Target: RASA4		
Immunogen: KLH conjugated synthetic peptide derived from human RASA4: 501-600/803.		
Purification: affinity purified by Protein A		Reactivity: Human, Mouse
Concentration: 1mg/ml		
Storage: 0.01M TBS (pH7.4) with 1% BSA, 0.02% Proclin300 and 50% Glycerol. Shipped at 4°C. Store at -20°C for one year. Avoid repeated freeze/thaw cycles.		Predicted MW.: 90 kDa
Background: This gene encodes a member of the GAP1 family of GTPase-activating proteins that suppresses the Ras/mitogen-activated protein kinase pathway in response to Ca(2+). Stimuli that increase intracellular Ca(2+) levels result in the translocation of this protein to the plasma membrane, where it activates Ras GTPase activity. Consequently, Ras is converted from the active GTP-bound state to the inactive GDP-bound state and no longer activates downstream pathways that regulate gene expression, cell growth, and differentiation. Multiple transcript variants encoding different isoforms have been found for this gene. [provided by RefSeq, Jul 2008]		Subcellular Location: Cytoplasm

— VALIDATION IMAGES —

Sample: Spleen (Mouse) Lysate at 40 ug
Primary: Anti-RASA4(bs-19732R) at 1/300 dilution
Secondary: IRDye800CW Goat Anti-Rabbit IgG at 1/20000 dilution
Predicted band size: 90kD
Observed band size: 90kD



Sample: HepG2 Cell (Human) Lysate at 40 ug
MCF-7 Cell (Human) Lysate at 40 ug
Lovo Cell (Human) Lysate at 40 ug
Primary: Anti-RASA4(bs-19732R) at 1/300 dilution
Secondary: IRDye800CW Goat Anti-Rabbit IgG at 1/20000 dilution
Predicted band size: 90kD
Observed band size: 90kD