

## RAB7L1 Rabbit pAb

Catalog Number: bs-19719R

Target Protein: RAB7L1

Concentration: 1mg/ml

Form: Liquid

Host: Rabbit

Clonality: Polyclonal

Isotype: IgG

Applications: IHC-P (1:100-500), IHC-F (1:100-500), IF (1:100-500)

Reactivity: Mouse (predicted:Human, Rat)

Predicted MW: 23 kDa

Entrez Gene: 8934

Swiss Prot: O14966

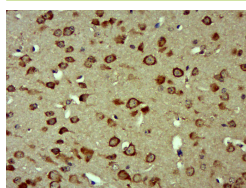
Source: KLH conjugated synthetic peptide derived from human RAB7L1: 1-100/203.

Purification: affinity purified by Protein A

Storage: 0.01M TBS (pH7.4) with 1% BSA, 0.02% Proclin300 and 50% Glycerol.

Shipped at 4°C. Store at -20°C for one year. Avoid repeated freeze/thaw cycles.

### VALIDATION IMAGES



Paraformaldehyde-fixed, paraffin embedded (Mouse brain); Antigen retrieval by boiling in sodium citrate buffer (pH6.0) for 15min; Block endogenous peroxidase by 3% hydrogen peroxide for 20 minutes; Blocking buffer (normal goat serum) at 37°C for 30min; Antibody incubation with (RAB7L1) Polyclonal Antibody, Unconjugated (bs-19719R) at 1:400 overnight at 4°C, followed by operating according to SP Kit(Rabbit) (sp-0023) instructions and DAB staining.

### PRODUCT SPECIFIC PUBLICATIONS

[IF=15.8] Zhenyu Wang, et al. Morphology-Mediated Tumor Deep Penetration for Enhanced Near Infrared II Photothermal and Chemotherapy of Colorectal Cancer. ACS NANO. 2024;18(41):28038–28051 IF ; Mouse . 39363419