

RAB3IL1 Rabbit pAb

Catalog Number: bs-19716R

Target Protein: RAB3IL1

Concentration: 1mg/ml

Form: Liquid

Host: Rabbit

Clonality: Polyclonal

Isotype: IgG

Applications: IHC-P (1:100-500), IHC-F (1:100-500), IF (1:100-500)

Reactivity: Mouse (predicted:Human, Rat)

Predicted MW: 43 kDa

Subcellular: Cytoplasm

Locations:

Entrez Gene: 5866

Swiss Prot: Q8TBN0

Source: KLH conjugated synthetic peptide derived from human RAB3IL1: 131-230/382.

Purification: affinity purified by Protein A

Storage: 0.01M TBS (pH7.4) with 1% BSA, 0.02% Proclin300 and 50% Glycerol.

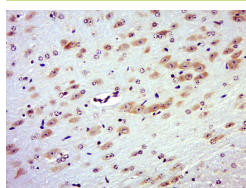
Shipped at 4°C. Store at -20°C for one year. Avoid repeated freeze/thaw cycles.

Background: This gene encodes a guanine nucleotide exchange factor for the ras-related protein Rab3A.

The encoded protein binds Rab3a and the inositol hexakisphosphate kinase InsP6K1.

Alternative splicing results in multiple transcript variants. A related pseudogene has been identified on chromosome 7. [provided by RefSeq, Nov 2012]

VALIDATION IMAGES



Paraformaldehyde-fixed, paraffin embedded (Mouse brain); Antigen retrieval by boiling in sodium citrate buffer (pH6.0) for 15min; Block endogenous peroxidase by 3% hydrogen peroxide for 20 minutes; Blocking buffer (normal goat serum) at 37°C for 30min; Antibody incubation with (RAB3IL1) Polyclonal Antibody, Unconjugated (bs-19716R) at 1:500 overnight at 4°C, followed by a conjugated secondary (sp-0023) for 20 minutes and DAB staining.