

bs-13998R

[Primary Antibody]

CORO6 Rabbit pAb

BioSS
ANTIBODIES

www.bioss.com.cn

sales@bioss.com.cn

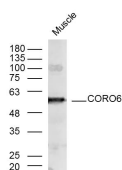
techsupport@bioss.com.cn

400-901-9800

— DATASHEET —

Host: Rabbit	Isotype: IgG	Applications: WB (1:500-2000)
Clonality: Polyclonal		
GeneID: 84940	SWISS: Q6QEF8	
Target: CORO6		
Immunogen: KLH conjugated synthetic peptide derived from human CORO6: 2-100/472.		
Purification: affinity purified by Protein A		
Concentration: 1mg/ml		
Storage: 0.01M TBS (pH7.4) with 1% BSA, 0.02% Proclin300 and 50% Glycerol. Shipped at 4°C. Store at -20°C for one year. Avoid repeated freeze/thaw cycles.		Reactivity: Mouse (predicted: Human, Rat, Sheep, Cow, Chicken, Dog, Horse)
		Predicted MW.: 53 kDa
		Subcellular Location: Cytoplasm

— VALIDATION IMAGES —



Sample: Muscle (Mouse) Lysate at 40 ug Primary:
Anti- CORO6 (bs-13998R) at 1/300 dilution
Secondary: IRDye800CW Goat Anti-Rabbit IgG at
1/20000 dilution Predicted band size: 53 kD
Observed band size: 53 kD