

bs-16065R**[Primary Antibody]****FcRH2 Rabbit pAb****Bioss**
ANTIBODIES

www.bioss.com.cn

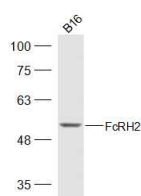
sales@bioss.com.cn

techsupport@bioss.com.cn

400-901-9800

— DATASHEET —

Host: Rabbit	Isotype: IgG	Applications: WB (1:500-2000)
Clonality: Polyclonal		Reactivity: Mouse (predicted: Human)
GeneID: 79368	SWISS: Q96LA5	
Target: FcRH2		
Immunogen: KLH conjugated synthetic peptide derived from human FcRH2: 51-150/508. < Extracellular >		Predicted MW.: 53 kDa
Purification: affinity purified by Protein A		Subcellular Location: Cell membrane
Concentration: 1mg/ml		
Storage: 0.01M TBS (pH7.4) with 1% BSA, 0.02% Proclin300 and 50% Glycerol. Shipped at 4°C. Store at -20°C for one year. Avoid repeated freeze/thaw cycles.		
Background: The Fc receptor homolog (FcRH) family of proteins are related to the classical Fc receptors (FcR) and belong to the immunoglobulin receptor superfamily. The proteins in the FcRH family are type I transmembrane glycoproteins and consist of FcRH1-FcRH6. The genes encoding the human FcRH proteins map to chromosome 1, near the related FCR genes. The FcRH proteins, which are involved in immune system regulation, have immunoreceptor-tyrosine inhibitory motifs in their cytoplasmic domains. Mutations in the gene encoding for the FcRH proteins may be associated with systemic lupus erythematosus, autoimmune thyroid disease and rheumatoid arthritis. The FcRH genes are expressed primarily, although not exclusively, by mature B lineage cells, and may serve important regulatory roles in normal and neoplastic B cell development.		

— VALIDATION IMAGES —

Sample: B16(Mouse) Cell Lysate at 40 ug
Primary: Anti-FcRH2 (bs-16065R) at 1/300
dilution Secondary: IRDye800CW Goat Anti-
Rabbit IgG at 1/20000 dilution Predicted band
size: 53 kD Observed band size: 53 kD