

bs-16060R

[Primary Antibody]

FCHSD2 Rabbit pAb

Bioss
ANTIBODIES

www.bioss.com.cn

sales@bioss.com.cn

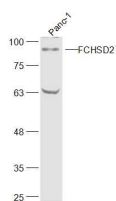
techsupport@bioss.com.cn

400-901-9800

— DATASHEET —

Host: Rabbit	Isotype: IgG	Applications: WB (1:500-2000)
Clonality: Polyclonal		Reactivity: Human (predicted: Mouse, Rat, Rabbit, Pig, Sheep, Cow, Dog, Horse)
GeneID: 9873	SWISS: O94868	Predicted MW.: 84 kDa
Target: FCHSD2		Subcellular Location: Nucleus
Immunogen: KLH conjugated synthetic peptide derived from human FCHSD2: 1-100/740.		
Purification: affinity purified by Protein A		
Concentration: 1mg/ml		
Storage: 0.01M TBS (pH7.4) with 1% BSA, 0.02% Proclin300 and 50% Glycerol. Shipped at 4°C. Store at -20°C for one year. Avoid repeated freeze/thaw cycles.		

— VALIDATION IMAGES —



Sample: Panc-1(Human) Cell Lysate at 30 ug
Primary: Anti-FCHSD2 (bs-16060R) at 1/300
dilution Secondary: IRDye800CW Goat Anti-
Rabbit IgG at 1/20000 dilution Predicted band
size: 84 kD Observed band size: 84 kD