

bs-16055R

[Primary Antibody]

FBXW9 Rabbit pAb

Bioss
ANTIBODIES

www.bioss.com.cn

sales@bioss.com.cn

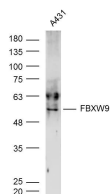
techsupport@bioss.com.cn

400-901-9800

— DATASHEET —

Host: Rabbit	Isotype: IgG	Applications: WB (1:500-2000)
Clonality: Polyclonal		Reactivity: Human (predicted: Mouse, Rat, Pig, Sheep, Cow, Dog, Horse)
GeneID: 84261	SWISS: Q5XUX1	Predicted MW.: 54 kDa
Target: FBXW9		Subcellular Location: Cytoplasm
Immunogen: KLH conjugated synthetic peptide derived from human FBXW9: 201-300/488.		
Purification: affinity purified by Protein A		
Concentration: 1mg/ml		
Storage: 0.01M TBS (pH7.4) with 1% BSA, 0.02% Proclin300 and 50% Glycerol. Shipped at 4°C. Store at -20°C for one year. Avoid repeated freeze/thaw cycles.		
Background: Members of the F-box protein family, such as FBXW9, are characterized by an approximately 40-amino acid F-box motif. SCF complexes, formed by SKP1 (MIM 601434), cullin (see CUL1; MIM 603034), and F-box proteins, act as protein-ubiquitin ligases. F-box proteins interact with SKP1 through the F box, and they interact with ubiquitination targets through other protein interaction domains (Jin et al., 2004 [PubMed 15520277]).[supplied by OMIM, Mar 2008]		

— VALIDATION IMAGES —



Sample: A431 Cell (Human) Lysate at 30 ug
Primary: Anti- FBXW9 (bs-16055R) at 1/300
dilution Secondary: IRDye800CW Goat Anti-
Rabbit IgG at 1/20000 dilution Predicted band
size: 54 kD Observed band size: 54 kD