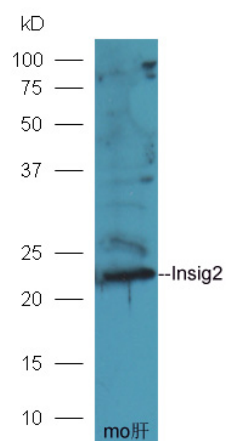

Insig2 Rabbit pAb

Catalog Number: bs-6625R
Target Protein: Insig2
Concentration: 1mg/ml
Form: Liquid
Host: Rabbit
Clonality: Polyclonal
Isotype: IgG
Applications: WB (1:500-2000)
Reactivity: Mouse (predicted:Human, Rat, Pig, Sheep, Cow, Dog, Horse)
Predicted MW: 25 kDa
Entrez Gene: 51141
Swiss Prot: Q9Y5U4
Source: KLH conjugated synthetic peptide derived from human Insig2: 65-160/225.
Purification: affinity purified by Protein A
Storage: 0.01M TBS (pH7.4) with 1% BSA, 0.02% Proclin300 and 50% Glycerol.
Shipped at 4°C. Store at -20°C for one year. Avoid repeated freeze/thaw cycles.
Background: Insig2 is highly similar to the protein product encoded by gene Insig1. Both Insig1 protein and Insig2 protein are endoplasmic reticulum proteins that block the processing of sterol regulatory element binding proteins (SREBPs) by binding to SREBP cleavage-activating protein (SCAP), and thus prevent SCAP from escorting SREBPs to the Golgi.

VALIDATION IMAGES



Sample: Liver (Mouse) Lysate at 40 ug Primary: Anti-Insig2 (bs-6625R) at 1/300 dilution Secondary: HRP conjugated Goat-Anti-rabbit IgG (bs-0295G-HRP) at 1/5000 dilution Predicted band size: 25 kD Observed band size: 23 kD