
EGFL6 Rabbit pAb

Catalog Number: bs-21427R

Target Protein: EGFL6

Concentration: 1mg/ml

Form: Liquid

Host: Rabbit

Clonality: Polyclonal

Isotype: IgG

Applications: WB (1:500-2000)

Reactivity: Human (predicted:Mouse, Rat, Cow, Dog, Horse)

Predicted MW: 59 kDa

Entrez Gene: 25975

Swiss Prot: Q8IUX8

Source: KLH conjugated synthetic peptide derived from human EGFL6: 481-581/553.

Purification: affinity purified by Protein A

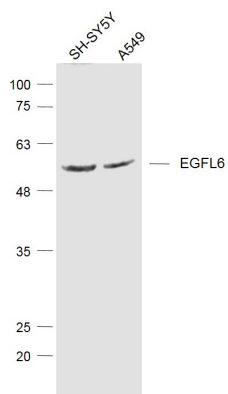
Storage: 0.01M TBS (pH7.4) with 1% BSA, 0.02% Proclin300 and 50% Glycerol.

Shipped at 4°C. Store at -20°C for one year. Avoid repeated freeze/thaw cycles.

Background: This gene encodes a member of the epidermal growth factor(EGF) repeat superfamily.

Members of this superfamily are characterized by the presence of EGF-like repeats and are often involved in the regulation of cell cycle, proliferation, and developmental processes. The gene product contains a signal peptide, suggesting that it is secreted; an EGF repeat region consisting of 4 complete EGF-like repeats and 1 partial EGF-like repeat, 3 of which have a calcium-binding consensus sequence; an arg-gly-asn integrin association motif; and a MAM domain, which is believed to have an adhesive function. This gene is expressed early during development, and its expression has been detected in lung and meningioma tumors. [provided by RefSeq, Jul 2008].

VALIDATION IMAGES



Sample: A549(Human) Cell Lysate at 30 ug SH-SY5Y (Human) Cell Lysate at 30 ug Primary: Anti- EGFL6 (bs-21427R) at 1/1000 dilution Secondary: IRDye800CW Goat Anti-Rabbit IgG at 1/20000 dilution Predicted band size: 59 kD Observed band size: 59 kD