

bs-22667R**[Primary Antibody]****IGF2BP2 Rabbit pAb****Bioss**
ANTIBODIES

www.bioss.com.cn

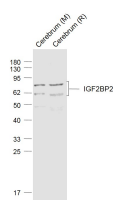
sales@bioss.com.cn

techsupport@bioss.com.cn

400-901-9800

— DATASHEET —

Host: Rabbit Clonality: Polyclonal GeneID: 10644 Target: IGF2BP2 Immunogen: KLH conjugated synthetic peptide derived from human IGF2BP2: 191-290/599. Purification: affinity purified by Protein A Concentration: 1mg/ml Storage: 0.01M TBS (pH7.4) with 1% BSA, 0.02% Proclin300 and 50% Glycerol. Shipped at 4°C. Store at -20°C for one year. Avoid repeated freeze/thaw cycles. Background: IGF2BP2 (insulin-like growth factor 2 mRNA binding protein 2) is also known as IGF2 mRNA-binding protein 2, IMP-2 (IGF-II mRNA-binding protein 2), VICKZ family member 2 or hepatocellular carcinoma autoantigen p62 and is a 556 amino acid protein. IGF2BP2 is expressed in a variety of tissues including heart, placenta, skeletal muscle, pancreas, fetal liver, lung, kidney, thymus and gonadal cells. IGF2BP2 is an RNA binding protein which may be involved in the regulation of mRNA translation and may also function to control the spatial localization of target mRNAs. Antibodies against IGF2BP2 have been detected in patients with HCC (hepatocellular carcinoma), suggesting that IGF2BP2 may have a role in the pathogenesis of HCC. Defects in IGF2BP2 are thought to be associated with susceptibility to type 2 diabetes mellitus.	Isotype: IgG SWISS: Q9Y6M1 Applications: WB (1:500-2000) Reactivity: Mouse, Rat (predicted: Human, Rabbit, Pig, Sheep, Cow, Dog) Predicted MW.: 66 kDa Subcellular Location: Cytoplasm
--	--

— VALIDATION IMAGES —

Sample: Lane 1: Cerebrum (Mouse) Lysate at 40 ug
Lane 2: Cerebrum (Rat) Lysate at 40 ug
Primary: Anti-IGF2BP2 (bs-22667R) at 1/1000 dilution
Secondary: IRDye800CW Goat Anti-Rabbit IgG at 1/20000 dilution
Predicted band size: 65' 60 kD
Observed band size: 70' 60' kD