
ABCB11 Rabbit pAb

Catalog Number: bs-42133R

Target Protein: ABCB11

Concentration: 1mg/ml

Form: Liquid

Host: Rabbit

Clonality: Polyclonal

Isotype: IgG

Applications: WB (1:500-2000)

Reactivity: Mouse (predicted:Rat)

Predicted MW: 146 kDa

Entrez Gene: 27413

Swiss Prot: Q9QY30

Source: Recombinant mouse ABCB11 protein: 616-750/1321.

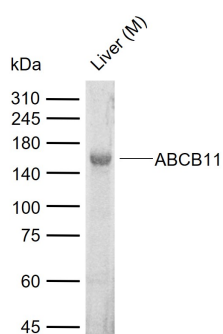
Purification: affinity purified by Protein A

Storage: 0.01M TBS (pH7.4) with 1% BSA, 0.02% Proclin300 and 50% Glycerol.

Shipped at 4°C. Store at -20°C for one year. Avoid repeated freeze/thaw cycles.

Background: The membrane-associated protein encoded by this gene is a member of the superfamily of ATP-binding cassette (ABC) transporters. ABC proteins transport various molecules across extra- and intra-cellular membranes. ABC genes are divided into seven distinct subfamilies (ABC1, MDR/TAP, MRP, ALD, OABP, GCN20, White). This protein is a member of the MDR/TAP subfamily. Members of the MDR/TAP subfamily are involved in multidrug resistance. The protein encoded by this gene is the major canalicular bile salt export pump in man. Mutations in this gene cause a form of progressive familial intrahepatic cholestases which are a group of inherited disorders with severe cholestatic liver disease from early infancy. [provided by RefSeq, Jul 2008]

VALIDATION IMAGES



Sample: Lane 1: Mouse Liver tissue lysates Primary: Anti-ABCB11 (bs-42133R) at 1/1000 dilution Secondary: IRDye800CW Goat Anti-Rabbit IgG at 1/20000 dilution Predicted band size: 146 kDa Observed band size: 146 kDa

PRODUCT SPECIFIC PUBLICATIONS

[IF=5.6] Kai Wang, et al. Silver carp muscle hydrolysate ameliorated atherosclerosis and liver injury in apoE^{-/-} mice: the modulator effects on enterohepatic cholesterol metabolism. FOOD SCI HUM WELL. 2024 Nov;13:3325 WB ; Mouse . 10.26599/FSHW.2023.9250018