

## IL7R Rabbit pAb

Catalog Number: bs-24840R

Target Protein: IL7R

Concentration: 1mg/ml

Form: Liquid

Host: Rabbit

Clonality: Polyclonal

Isotype: IgG

Applications: WB (1:500-2000)

Reactivity: Human, Mouse, Rat (predicted:Pig, Sheep, Cow, Dog, Horse)

Predicted MW: 50 kDa

Entrez Gene: 3575

Swiss Prot: P16871

Source: KLH conjugated synthetic peptide derived from human IL-7Ra : 401-459/459.

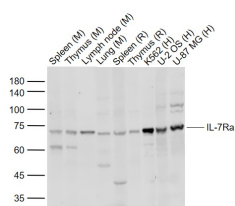
Purification: affinity purified by Protein A

Storage: 0.01M TBS (pH7.4) with 1% BSA, 0.02% Proclin300 and 50% Glycerol.

Shipped at 4°C. Store at -20°C for one year. Avoid repeated freeze/thaw cycles.

**Background:** The protein encoded by this gene is a receptor for interleukine 7 (IL7). The function of this receptor requires the interleukin 2 receptor, gamma chain (IL2RG), which is a common gamma chain shared by the receptors of various cytokines, including interleukine 2, 4, 7, 9, and 15. This protein has been shown to play a critical role in the V(D)J recombination during lymphocyte development. This protein is also found to control the accessibility of the TCR gamma locus by STAT5 and histone acetylation. Knockout studies in mice suggested that blocking apoptosis is an essential function of this protein during differentiation and activation of T lymphocytes. The functional defects in this protein may be associated with the pathogenesis of the severe combined immunodeficiency (SCID).

## VALIDATION IMAGES



Sample: Lane 1: Mouse Spleen tissue lysates Lane 2: Mouse Thymus tissue lysates Lane 3: Mouse Lymph node tissue lysates Lane 4: Mouse Lung tissue lysates Lane 5: Rat Spleen tissue lysates Lane 6: Rat Thymus tissue lysates Lane 7: Human K562 cell lysates Lane 8: Human U-2 OS cell lysates Lane 9: Human U-87 MG cell lysates Primary: Anti-IL-7Ra (bs-24840R) at 1/1000 dilution Secondary: IRDye800CW Goat Anti-Rabbit IgG at 1/20000 dilution Predicted band size: 50 kD Observed band size: 70 kD