

bs-13102R**[Primary Antibody]****Epsin 2 Rabbit pAb****BioSS**
ANTIBODIES

www.bioss.com.cn

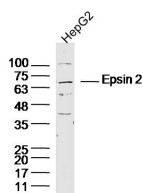
sales@bioss.com.cn

techsupport@bioss.com.cn

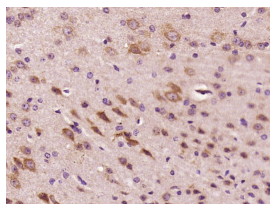
400-901-9800

— DATASHEET —

Host: Rabbit	Isotype: IgG	Applications: WB (1:500-2000)
Clonality: Polyclonal		IHC-P (1:100-500)
GeneID: 22905	SWISS: Q95208	IHC-F (1:100-500)
Target: Epsin 2		IF (1:100-500)
Immunogen: KLH conjugated synthetic peptide derived from human Epsin 2: 31-130/641.		Reactivity: Human, Mouse (predicted: Rat, Rabbit, Cow, Chicken, Dog, Horse)
Purification: affinity purified by Protein A		
Concentration: 1mg/ml		Predicted MW.: 69 kDa
Storage: 0.01M TBS (pH7.4) with 1% BSA, 0.02% Proclin300 and 50% Glycerol. Shipped at 4°C. Store at -20°C for one year. Avoid repeated freeze/thaw cycles.		Subcellular Location: Cytoplasm
Background: Elucidation of the mechanism by which receptor tyrosine kinases (RTKs) modulate cellular physiology in response to stimuli is critical to the understanding of growth regulation. Miscues in RTK signaling pathways can result in cellular transformation and ultimately in cancer. Two novel EGF receptor pathway substrates 8 and 15, or Eps8 and Eps15. Epsin is a binding partner to Eps15. Both epsin and Eps15 have an ubiquitous tissue distribution but are concentrated in presynaptic nerve terminals specialized for the Clathrin-mediated endocytosis of synaptic vesicles. Disruption of epsin function blocks Clathrin-mediated endocytosis. Epsin, along with its binding partner Eps15, is proposed to be involved in the assistance of Clathrin coat rearrangement during Clathrin coated pit invagination. Epsin 2a, and 2b are splicing variants of epsin 2, which is associated with Clathrin-mediated endocytosis and are enriched in the brain in the peri-Golgi region.		

— VALIDATION IMAGES —

Sample: HepG2(human) Cell Lysate at 40 ug
 Primary: Anti-Epsin2(bs-13102R) at 1/300
 dilution Secondary: IRDye800CW Goat Anti-Rabbit IgG at 1/20000 dilution Predicted band size: 69 kD Observed band size: 69 kD



Paraformaldehyde-fixed, paraffin embedded (mouse brain tissue); Antigen retrieval by boiling in sodium citrate buffer (pH6.0) for 15min; Block endogenous peroxidase by 3% hydrogen peroxide for 20 minutes; Blocking buffer (normal goat serum) at 37°C for 30min; Antibody incubation with (Epsin 2) Polyclonal Antibody, Unconjugated (bs-13102R) at 1:400 overnight at 4°C, followed by operating according to SP Kit(Rabbit) (sp-0023) instructions and DAB staining.