

bs-13101R**[Primary Antibody]****Bioss**
ANTIBODIES

www.bioss.com.cn

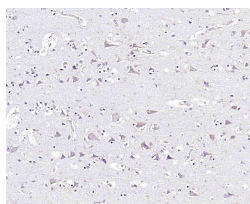
sales@bioss.com.cn

techsupport@bioss.com.cn

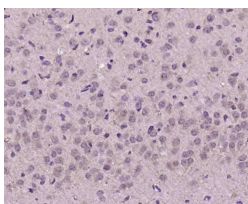
400-901-9800

Epsin 1 Rabbit pAb**— DATASHEET —**

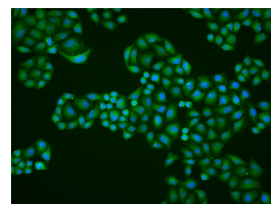
Host: Rabbit	Isotype: IgG	Applications: IHC-P (1:100-500) IHC-F (1:100-500) IF (1:100-500) ICC/IF (1:50) Reactivity: Human, Rat (predicted: Mouse, Sheep, Dog, Horse) Predicted MW.: 60 kDa Subcellular Location: Cell membrane ,Cytoplasm ,Nucleus
Clonality: Polyclonal		
GeneID: 29924	SWISS: Q9Y6I3	
Target: Epsin 1		
Immunogen: KLH conjugated synthetic peptide derived from human Epsin 1/EPN1: 101-200/576.		
Purification: affinity purified by Protein A		
Concentration: 1mg/ml		
Storage: 0.01M TBS (pH7.4) with 1% BSA, 0.02% Proclin300 and 50% Glycerol. Shipped at 4°C. Store at -20°C for one year. Avoid repeated freeze/thaw cycles.		
Background: Epsin 1 is an endocytic accessory protein, with significant similarity to the Xenopus mitotic phosphoprotein MP90. Epsin 1 interacts with Eps15 (the γ subunit of the Clathrin adaptor AP2), Clathrin and other accessory proteins. The mitotic phosphorylation of these proteins may be one of the mechanisms by which the invagination of Clathrin-coated pits is blocked in mitosis. Both Epsin and Eps15, like other cytosolic components of the synaptic vesicle endo-cytic machinery, undergo constitutive phosphorylation and depolarization-dependent dephosphorylation in nerve terminals. Epsin 1 also contributes to the mechanism of Clathrin-vesicle-dependent endocytosis. The human Epsin 1 protein contains an Epsin N-terminal homology (ENTH) region and a single Clathrin-binding (LVDLD) motif. Epsin 1 localizes to the leading edge of a vesicular coated pit where the membrane is being actively bent.		

— VALIDATION IMAGES —

Paraformaldehyde-fixed, paraffin embedded (human brain); Antigen retrieval by boiling in sodium citrate buffer (pH6.0) for 15min; Block endogenous peroxidase by 3% hydrogen peroxide for 20 minutes; Blocking buffer (normal goat serum) at 37°C for 30min; Incubation with (Epsin 1 Rabbit pAb) Polyclonal Antibody, Unconjugated (bs-13101R) at 1:200 overnight at 4°C, followed by operating according to SP Kit(Rabbit) (sp-0023) instructions and DAB staining.



Paraformaldehyde-fixed, paraffin embedded (rat brain); Antigen retrieval by boiling in sodium citrate buffer (pH6.0) for 15min; Block endogenous peroxidase by 3% hydrogen peroxide for 20 minutes; Blocking buffer (normal goat serum) at 37°C for 30min; Incubation with (Epsin 1 Rabbit pAb) Polyclonal Antibody, Unconjugated (bs-13101R) at 1:200 overnight at 4°C, followed by operating according to SP Kit(Rabbit) (sp-0023) instructions and DAB staining.



Hela cell; 4% Paraformaldehyde-fixed; Triton X-100 at room temperature for 20 min; Blocking buffer (normal goat serum, C-0005) at 37°C for 20 min; Antibody incubation with (Epsin 1) polyclonal Antibody, Unconjugated (bs-13101R) 1:50, 90 minutes at 37°C; followed by a conjugated Goat Anti-Rabbit IgG antibody at 37°C for 90 minutes, DAPI (blue, C02-04002) was used to stain the cell nuclei.