

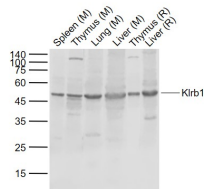
**bs-21419R****[ Primary Antibody ]****Klrb1 Rabbit pAb****Bioss**  
ANTIBODIES

www.bioss.com.cn

sales@bioss.com.cn

techsupport@bioss.com.cn

400-901-9800

**DATASHEET****Host:** Rabbit**Isotype:** IgG**Applications:** WB (1:500-2000)**Clonality:** Polyclonal**Reactivity:** Mouse, Rat**Target:** Klrb1**Immunogen:** KLH conjugated synthetic peptide derived from rat Klrb1: 31-131/214. < Extracellular >**Purification:** affinity purified by Protein A**Concentration:** 1mg/ml**Storage:** 0.01M TBS (pH7.4) with 1% BSA, 0.02% Proclin300 and 50% Glycerol.  
Shipped at 4°C. Store at -20°C for one year. Avoid repeated freeze/thaw cycles.**Predicted MW.:** 25 kDa**Subcellular Location:** Cell membrane**Background:** Natural killer (NK) cells are lymphocytes that mediate cytotoxicity and secrete cytokines after immune stimulation. Several genes of the C-type lectin superfamily, including the rodent NKRP1 family of glycoproteins, are expressed by NK cells and may be involved in the regulation of NK cell function. The KLRB1 protein contains an extracellular domain with several motifs characteristic of C-type lectins, a transmembrane domain, and a cytoplasmic domain. The KLRB1 protein is classified as a type II membrane protein because it has an external C terminus. [provided by RefSeq, Jul 2008]**VALIDATION IMAGES**

Sample: Lane 1: Mouse Spleen tissue lysates  
Lane 2: Mouse Thymus tissue lysates Lane 3:  
Mouse Lung tissue lysates Lane 4: Mouse Liver  
tissue lysates Lane 5: Rat Thymus tissue lysates  
Lane 6: Rat Liver tissue lysates Primary: Anti-  
Klrb1 (bs-21419R) at 1/1000 dilution Secondary:  
IRDye800CW Goat Anti-Rabbit IgG at 1/20000  
dilution Predicted band size: 25 kDa Observed  
band size: 48 kDa