

bs-21534R**[Primary Antibody]****HATH6/Protein atonal homolog 8 Rabbit pAb****BioSS**
ANTIBODIES

www.bioss.com.cn

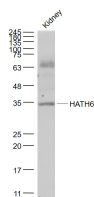
sales@bioss.com.cn

techsupport@bioss.com.cn

400-901-9800

— DATASHEET —

Host: Rabbit	Isotype: IgG	Applications: WB (1:500-2000)
Clonality: Polyclonal		Reactivity: Mouse (predicted: Rat)
GeneID: 71093	SWISS: Q99NA2	
Target: HATH6/Protein atonal homolog 8		
Immunogen: KLH conjugated synthetic peptide derived from mouse HATH6/Protein atonal homolog 8: 1-100/322.		Predicted MW.: 35 kDa
Purification: affinity purified by Protein A		Subcellular Location: Nucleus
Concentration: 1mg/ml		
Storage: 0.01M TBS (pH7.4) with 1% BSA, 0.02% Proclin300 and 50% Glycerol. Shipped at 4°C. Store at -20°C for one year. Avoid repeated freeze/thaw cycles.		
Background: Putative transcription factor. May be implicated in specification and differentiation of neuronal cell lineages in the brain. May participate in kidney development and may be involved in podocyte differentiation.		

— VALIDATION IMAGES —

Sample: Kidney (Mouse) Lysate at 40 ug Primary:
Anti- HATH6 (bs-21534R) at 1/1000 dilution
Secondary: IRDye800CW Goat Anti-Rabbit IgG at
1/20000 dilution Predicted band size: 35 kD
Observed band size: 35 kD