
Recombinant PCV2 Cap protein, Trx & His

Catalog Number: bs-41401P

Concentration: >0.5 mg/ml

AA Seq: 1-233/233

Predicted MW: 41.5

Detected MW: 45 kDa

Tags: Trx & His

Activity: Not tested

Endotoxin: Not analyzed

Purity: >95% as determined by SDS-PAGE

Purification: AC

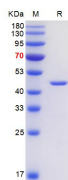
Form: Lyophilized or Liquid

Storage: 20mM Tris-HCl (pH8.0).

Stored at -70°C or -20°C. Avoid repeated freeze/thaw cycles.

Background: Self-assembles to form the virion icosahedral capsid with a T=1 symmetry. This very small capsid (17 - 22 nm in diameter) allows the virus to be very stable in the environment and resistant to some disinfectants, including detergents. Essential for the initial attachment to heparan sulfate moities and chondroitin sulfate B of the host cell surface proteoglycans. After attachment, the virus is internalized in a clathrin-, caveolae- and dynamin-independent, actin and Rho-GTPase-mediated pathway and traffics to the nucleus. The capsid protein binds and transports the viral genome and Rep across the nuclear envelope.

VALIDATION IMAGES



The purity of the protein is greater than 90% as determined by reducing SDS-PAGE.