

bs-7139R**[Primary Antibody]****phospho-TFII I (Tyr248) Rabbit pAb****Bioss**
ANTIBODIES

www.bioss.com.cn

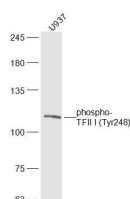
sales@bioss.com.cn

techsupport@bioss.com.cn

400-901-9800

— DATASHEET —

Host: Rabbit	Isotype: IgG	Applications: WB (1:500-2000)
Clonality: Polyclonal		Reactivity: Human (predicted: Mouse, Rat, Rabbit, Pig, Sheep, Cow, Dog, Horse)
GeneID: 2969	SWISS: P78347	Predicted MW.: 112 kDa
Target: TFII I (Tyr248)		Subcellular Location: Cytoplasm ,Nucleus
Immunogen: KLH conjugated synthesised phosphopeptide derived from human TFII I around the phosphorylation site of Tyr248: PD(p-Y)YQ.		
Purification: affinity purified by Protein A		
Concentration: 1mg/ml		
Storage: 0.01M TBS (pH7.4) with 1% BSA, 0.02% Proclin300 and 50% Glycerol. Shipped at 4°C. Store at -20°C for one year. Avoid repeated freeze/thaw cycles.		
Background: TFII I is a ubiquitously expressed multifunctional transcription factor with broad biological roles in transcription and signal transduction in a variety of cell types. It has been shown that TFII I can interact physically and functionally with Btk (Bruton's tyrosine kinase), a hematopoietic non-receptor protein tyrosine kinase that is critical for B lymphocyte development.		

— VALIDATION IMAGES —

Sample: U937 (Human) Lysate at 30 ug Primary:
Anti-phospho-TFII I (Tyr248) (bs-7139R) at 1/300
dilution Secondary: IRDye800CW Goat Anti-
Rabbit IgG at 1/20000 dilution Predicted band
size: 112 kD Observed band size: 112 kD