

bsm-33228M**[Primary Antibody]****Cyclophilin B Mouse mAb, Loading Control****BioSS**
ANTIBODIES

www.bioss.com.cn

sales@bioss.com.cn

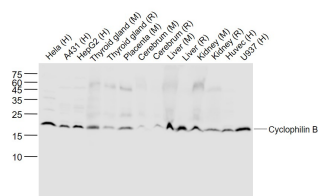
techsupport@bioss.com.cn

400-901-9800

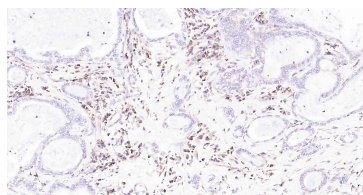
DATASHEET**Host:** Mouse**Clonality:** Monoclonal**GeneID:** 5479**Target:** Cyclophilin B**Purification:** affinity purified by Protein G**Concentration:** 1mg/ml

Storage: Size : 50ul/100ul/200ul
0.01M TBS (pH7.4) with 1% BSA, 0.02% Proclin300 and 50% Glycerol.
Size : 200ug (PBS only)
0.01M PBS
Shipped at 4°C. Store at -20°C for one year. Avoid repeated freeze/thaw cycles.

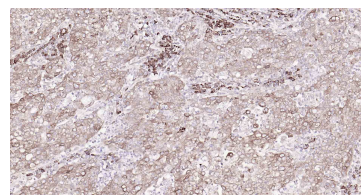
Background: The cyclophilins are a conserved class of proteins that bind the immunosuppressive drug cyclosporin A (CsA) with high affinity. CsA blocks helper T-cell activation at a step between T-cell receptor stimulation and the transcriptional activation of cytokine genes. Cyclophilins from many species possess peptidyl-prolyl cis-trans isomerase (PPIase) activity that is blocked by CsA and therefore may be relevant in CsA-mediated immunosuppression.

Isotype: IgG**CloneNo.:** 4C7**SWISS:** P23284**Applications:** WB (1:500-2000)**IHC-P** (1:100-500)**IHC-F** (1:100-500)**IF** (1:100-500)**Reactivity:** Human, Mouse, Rat**Predicted MW.:** 20 kDa**Subcellular Location:** Cytoplasm**VALIDATION IMAGES**

Sample: Lane 1: HeLa (Human) Cell Lysate at 30 ug
Lane 2: A431 (Human) Cell Lysate at 30 ug
Lane 3: HepG2 (Human) Cell Lysate at 30 ug
Lane 4: Thyroid gland (Mouse) Lysate at 40 ug
Lane 5: Thyroid gland (Rat) Lysate at 40 ug
Lane 6: Placenta (Mouse) Lysate at 40 ug
Lane 7: Cerebrum (Mouse) Lysate at 40 ug
Lane 8: Cerebrum (Rat) Lysate at 40 ug
Lane 9: Liver (Mouse) Lysate at 40 ug
Lane 10: Liver (Rat) Lysate at 40 ug
Lane 11: Kidney (Mouse) Lysate at 40 ug
Lane 12: Kidney (Rat) Lysate at 40 ug
Lane 13: Huvec (Human) Cell Lysate at 30 ug
Lane 14: U937 (Human) Cell Lysate at 30 ug
Primary: Anti-Cyclophilin B (bsm-33228M) at 1/1000 dilution
Secondary: IRDye800CW Goat Anti-Mouse IgG at 1/20000 dilution
Predicted band size: 20 kD
Observed band size: 20 kD



Paraformaldehyde-fixed, paraffin embedded Human Pancreatic Cancer; Antigen retrieval by boiling in sodium citrate buffer (pH6.0) for 15 min; Antibody incubation with Cyclophilin B (Loading Control) Monoclonal Antibody, Unconjugated (bsm-33228M) at 1:200 overnight at 4°C, followed by conjugation to the SP Kit (Mouse, sp-0024) and DAB (C-0010) staining.



Paraformaldehyde-fixed, paraffin embedded Human Gastric Cancer; Antigen retrieval by boiling in sodium citrate buffer (pH6.0) for 15 min; Antibody incubation with Cyclophilin B (Loading Control) Monoclonal Antibody, Unconjugated (bsm-33228M) at 1:200 overnight at 4°C, followed by conjugation to the SP Kit (Mouse, sp-0024) and DAB (C-0010) staining.