

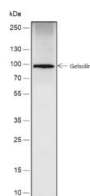
bsm-54290R**[Primary Antibody]****Bioss**
ANTIBODIES

www.bioss.com.cn

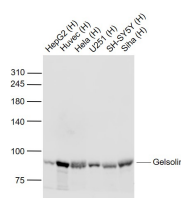
sales@bioss.com.cn

techsupport@bioss.com.cn

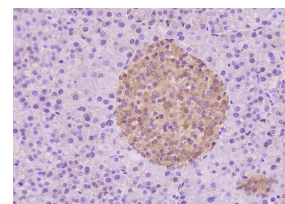
400-901-9800

Gelsolin Recombinant Rabbit mAb**DATASHEET****Host:** Rabbit**Isotype:** IgG**Clonality:** Recombinant**CloneNo.:** 2G6**GeneID:** 2934**SWISS:** P06396**Target:** Gelsolin**Purification:** affinity purified by Protein A**Concentration:** 1mg/ml**Storage:** 0.01M TBS (pH7.4) with 1% BSA, 0.02% Proclin300 and 50% Glycerol.
Shipped at 4°C. Store at -20°C for one year. Avoid repeated freeze/thaw cycles.**Background:** bs-1160P is one synthetic peptide derived from human Gelsolin. Gelsolin is a calcium dependent actin binding protein. It is a potent modulator of actin filament length and gelation. Gelsolin has been shown to exist in at least two variant forms, cytoplasmic gelsolin and plasma gelsolin. Plasma gelsolin has also been called actin depolymerizing factor (ADF) or brevin. Human plasma and rabbit macrophage gelsolins differ by the presence of a 25 amino acid residue extension at the NH2 terminus in the human plasma gelsolin, which appears to account for the difference in relative molecular weights.**Applications:** WB (1:500-2000)**IHC-P** (1:50-200)**IHC-F** (1:50-200)**IF** (1:50-200)**ICC/IF** (1:50-200)**Reactivity:** Human, Mouse**Predicted MW.:** 80 kDa**Subcellular Location:** Secreted ,Cytoplasm**VALIDATION IMAGES**

Blocking buffer: 5% NFDM/TBST Primary Ab dilution: 1:2000 Primary Ab incubation condition: 2 hours at room temperature
Secondary Ab: Goat Anti-Rabbit IgG H&L (HRP)
Lysate: Human plasma Protein loading quantity: 20 µg Exposure time: 30 s Predicted MW: 81 kDa
Observed MW: 81 kDa



Sample: Lane 1: HepG2 (Human) Cell Lysate at 30 ug Lane 2: Huvec (Human) Cell Lysate at 30 ug Lane 3: Hela (Human) Cell Lysate at 30 ug Lane 4: U251 (Human) Cell Lysate at 30 ug Lane 5: SH-SY5Y (Human) Cell Lysate at 30 ug Lane 6: Siha (Human) Cell Lysate at 30 ug Primary: Anti-Gelsolin (bsm-54290R) at 1/1000 dilution
Secondary: IRDye800CW Goat Anti-Rabbit IgG at 1/20000 dilution Predicted band size: 90 kD
Observed band size: 90 kD



Paraformaldehyde-fixed, paraffin embedded (mouse pancreas); Antigen retrieval by boiling in sodium citrate buffer (pH6.0) for 15min; Block endogenous peroxidase by 3% hydrogen peroxide for 20 minutes; Blocking buffer (normal goat serum) at 37°C for 30min; Antibody incubation with (Gelsolin) Monoclonal Antibody, Unconjugated (bsm-54290R) at 1:200 overnight at 4°C, followed by operating according to SP Kit(Rabbit) (sp-0023) instructions and DAB staining.