

bs-1896R**[Primary Antibody]****BioSS**
ANTIBODIES

www.bioss.com.cn

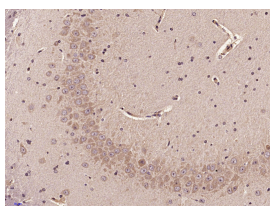
sales@bioss.com.cn

techsupport@bioss.com.cn

400-901-9800

SOCS2 Rabbit pAb**— DATASHEET —**

Host: Rabbit Clonality: Polyclonal GeneID: 8835 Target: SOCS2 Immunogen: KLH conjugated synthetic peptide derived from human Socs2: 1-100/198. Purification: affinity purified by Protein A Concentration: 1mg/ml Storage: 0.01M TBS (pH7.4) with 1% BSA, 0.02% Proclin300 and 50% Glycerol. Shipped at 4°C. Store at -20°C for one year. Avoid repeated freeze/thaw cycles. Background: This gene encodes a member of the suppressor of cytokine signaling (SOCS) family. SOCS family members are cytokine-inducible negative regulators of cytokine receptor signaling via the Janus kinase/signal transducer and activation of transcription pathway (the JAK/STAT pathway). SOCS family proteins interact with major molecules of signaling complexes to block further signal transduction, in part, by proteasomal depletion of receptors or signal-transducing proteins via ubiquitination. The expression of this gene can be induced by a subset of cytokines, including erythropoietin, GM-CSF, IL10, interferon (IFN)-gamma and by cytokine receptors such as growth hormone receptor. The protein encoded by this gene interacts with the cytoplasmic domain of insulin-like growth factor-1 receptor (IGF1R) and is thought to be involved in the regulation of IGF1R mediated cell signaling. This gene has pseudogenes on chromosomes 20 and 22. Alternative splicing results in multiple transcript variants. [provided by RefSeq, Jul 2012]	Isotype: IgG SWISS: O14508 Applications: IHC-P (1:100-500) IHC-F (1:100-500) IF (1:100-500) Reactivity: Rat (predicted: Human, Mouse, Pig, Cow, Dog, Horse) Predicted MW.: 23 kDa Subcellular Location: Cytoplasm
---	--

— VALIDATION IMAGES —

Paraformaldehyde-fixed, paraffin embedded (Rat brain); Antigen retrieval by microwave in sodium citrate buffer (pH6.0) ; Block endogenous peroxidase by 3% hydrogen peroxide for 30 minutes; Blocking buffer (3% BSA) at RT for 30min; Antibody incubation with (SOCS2) Polyclonal Antibody, Unconjugated (bs-1896R) at 1:400 overnight at 4°C, followed by conjugation to the secondary antibody (labeled with HRP) and DAB staining.

— SELECTED CITATIONS —

- **[IF=5.08]** Letellier, E., et al. "Identification of SOCS2 and SOCS6 as biomarkers in human colorectal cancer." British Journal of Cancer (2014). IHC ;Human. 25025962

Important Note: This product as supplied is intended for research use only, not for use in human, therapeutic or diagnostic applications.

- **[IF=3.56]** Shin, Yoo-Jin, et al. "Expression of SOCS2 mRNA and protein in the ischemic core and penumbra after transient focal cerebral ischemia in rats." *Cell and tissue research* (2015): 1-15. IHC ;Rat. 26563457
- **[IF=3.738]** Zong, Jinxin. et al. Lithium Chloride Promotes Milk Protein and Fat Synthesis in Bovine Mammary Epithelial Cells via HIF-1 α and β -Catenin Signaling Pathways. *Biol Trace Elem Res.* 2022 Jan;;1-16 WB ;Bovine. 35080710
- **[IF=2.33]** Zhu, Jian-guo, et al. "Expression of SOCSs in human prostate cancer and their association in prognosis." *Molecular and cellular biochemistry* (2013): 1-9. WB ;Human. 23666742