

**bs-1897R****[ Primary Antibody ]**

## Synaptotagmin-4 Rabbit pAb

**Bioss**  
ANTIBODIES

www.bioss.com.cn

sales@bioss.com.cn

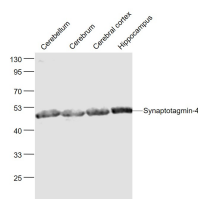
techsupport@bioss.com.cn

400-901-9800

### — DATASHEET —

<b>Host:</b> Rabbit	<b>Isotype:</b> IgG	<b>Applications:</b> WB (1:500-2000)
<b>Clonality:</b> Polyclonal		<b>Reactivity:</b> Mouse, Rat (predicted: Human, Rabbit, Cow, Chicken, Dog)
<b>GeneID:</b> 6860	<b>SWISS:</b> Q9H2B2	<b>Predicted MW.:</b> 48 kDa
<b>Target:</b> Synaptotagmin-4		<b>Subcellular Location:</b> Cell membrane
<b>Immunogen:</b> KLH conjugated synthetic peptide derived from human Synaptotagmin-4: 301-400/425.		
<b>Purification:</b> affinity purified by Protein A		
<b>Concentration:</b> 1mg/ml		
<b>Storage:</b> 0.01M TBS (pH7.4) with 1% BSA, 0.02% Proclin300 and 50% Glycerol. Shipped at 4°C. Store at -20°C for one year. Avoid repeated freeze/thaw cycles.		
<b>Background:</b> The protein encoded by this gene belongs to the synaptotagmin family. Members of this family are multi-domained, integral membrane proteins of synaptic vesicles, and are thought to serve as Ca <sup>2+</sup> sensors in the process of vesicular trafficking and exocytosis. This gene is primarily expressed in the nervous tissues. [provided by RefSeq].		

### — VALIDATION IMAGES —



Sample: Cerebellum (Mouse) Lysate at 40 ug  
Cerebrum (Rat) Lysate at 40 ug Cerebral cortex  
(Mouse) Lysate at 40 ug Hippocampus (Mouse)  
Lysate at 40 ug Primary: Anti- Synaptotagmin-4  
(bs-1897R) at 1/1000 dilution Secondary:  
IRDye800CW Goat Anti-Rabbit IgG at 1/20000  
dilution Predicted band size: 48 kD Observed  
band size: 50 kD