
CLEC9A Rabbit pAb

Catalog Number: bs-13621R

Target Protein: CLEC9A

Concentration: 1mg/ml

Form: Liquid

Host: Rabbit

Clonality: Polyclonal

Isotype: IgG

Applications: WB (1:500-2000)

Reactivity: Mouse (predicted:Rat)

Predicted MW: 27 kDa

Entrez Gene: 232414

Swiss Prot: Q8BRU4

Source: KLH conjugated synthetic peptide derived from mouse CLEC9A: 1-100/238.

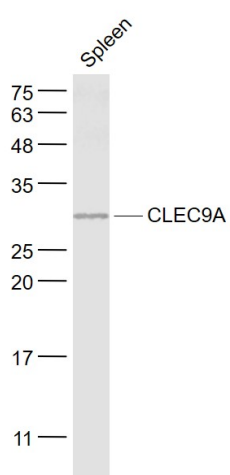
Purification: affinity purified by Protein A

Storage: 0.01M TBS (pH7.4) with 1% BSA, 0.02% Proclin300 and 50% Glycerol.

Shipped at 4°C. Store at -20°C for one year. Avoid repeated freeze/thaw cycles.

Background: The C-type lectin/C-type lectin-like domain (CTL/CTLD) superfamily consists of a variety of proteins that share a common protein fold and have diverse functions, including cell-cell signaling, cell adhesion, glycoprotein turnover and immune responses. CLEC-9A (C-type lectin domain family 9 member A), also known as DNGR1 (dendritic cell natural killer lectin group receptor 1), is a 241 amino acid single-pass type II membrane protein that contains one C-type lectin domain and belongs to the CTL/CTLD superfamily. Expressed in myeloid lineage cells, brain, spleen and thymus, CLEC-9A is a group V C-type lectin-like receptor (CTLR) that acts as an activation receptor. The gene encoding CLEC-9A maps to human chromosome 12p13.2 and mouse chromosome 6 F3.

VALIDATION IMAGES



Sample: Spleen (Mouse) Lysate at 40 ug Primary: Anti- CLEC9A (bs-13621R) at 1/1000 dilution Secondary: IRDye800CW Goat Anti-Rabbit IgG at 1/20000 dilution Predicted band size: 27 kD Observed band size: 27 kD

PRODUCT SPECIFIC PUBLICATIONS

[IF=8.701] Tatsuaki Watanabe. et al. Donor Batf3 inhibits murine lung allograft rejection and airway fibrosis. MUCOSAL IMMUNOL. 2023 Feb;; IF ; Mouse . 36842540