

**bs-13619R****[ Primary Antibody ]****FA20A Rabbit pAb****BioSS**  
**ANTIBODIES**

www.bioss.com.cn

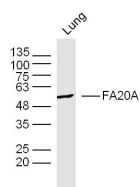
sales@bioss.com.cn

techsupport@bioss.com.cn

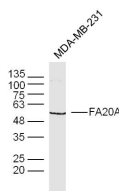
400-901-9800

**— DATASHEET —**

<b>Host:</b> Rabbit	<b>Isotype:</b> IgG	<b>Applications:</b> WB (1:500-2000)
<b>Clonality:</b> Polyclonal		<b>Reactivity:</b> Human, Mouse (predicted: Rat, Rabbit)
<b>GeneID:</b> 54757	<b>SWISS:</b> Q96MK3	
<b>Target:</b> FA20A		<b>Predicted MW.:</b> 57 kDa
<b>Immunogen:</b> KLH conjugated synthetic peptide derived from human FA20A: 101-200/541.		<b>Subcellular Location:</b> Cytoplasm
<b>Purification:</b> affinity purified by Protein A		
<b>Concentration:</b> 1mg/ml		
<b>Storage:</b> 0.01M TBS (pH7.4) with 1% BSA, 0.02% Proclin300 and 50% Glycerol. Shipped at 4°C. Store at -20°C for one year. Avoid repeated freeze/thaw cycles.		
<b>Background:</b> FA20A belongs to the FAM20 family. All FAM20 proteins contain putative conserved signal sequences as well as a conserved C terminal domain. FA20A is a secreted glycoprotein. It has been found in EML and MPRO cell lines, with low levels in undifferentiated cells. FA20A is induced during maturation to promyelocyte stage of neutrophil differentiation and decreased during neutrophil terminal differentiation.		

**— VALIDATION IMAGES —**

Sample: Lung(Mouse) Lysate at 40 ug Primary:  
Anti-FA20A(bs-10196R) at 1/300 dilution  
Secondary: IRDye800CW Goat Anti-Rabbit IgG at  
1/20000 dilution Predicted band size: 57 kD  
Observed band size: 57 kD



Sample: MDA-MB-231 (human) Cell Lysate at 40 ug Primary: Anti-FA20A(bs-13619R) at 1/300 dilution  
Secondary: IRDye800CW Goat Anti-Rabbit IgG at 1/20000 dilution Predicted band size: 57 kD  
Observed band size: 57 kD