

**bs-6727R****[ Primary Antibody ]****CAMK4 Rabbit pAb****Bioss**  
**ANTIBODIES**

www.bioss.com.cn

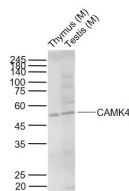
sales@bioss.com.cn

techsupport@bioss.com.cn

400-901-9800

**— DATASHEET —**

<b>Host:</b> Rabbit <b>Clonality:</b> Polyclonal <b>GeneID:</b> 814 <b>Target:</b> CAMK4 <b>Immunogen:</b> KLH conjugated synthetic peptide derived from human CAMKIV/CAMK4: 101-200/473. <b>Purification:</b> affinity purified by Protein A <b>Concentration:</b> 1mg/ml <b>Storage:</b> 0.01M TBS (pH7.4) with 1% BSA, 0.02% Proclin300 and 50% Glycerol. Shipped at 4°C. Store at -20°C for one year. Avoid repeated freeze/thaw cycles. <b>Background:</b> Ca <sup>2+</sup> /calmodulin dependent protein kinase type IV (CAMKIV) belongs to the serine/threonine protein kinase family, and to the Ca <sup>2+</sup> /calmodulin-dependent protein kinase subfamily. This enzyme is a multifunctional serine/threonine protein kinase with limited tissue distribution, that has been implicated in transcriptional regulation in lymphocytes, neurons and male germ cells.	<b>Isotype:</b> IgG <b>SWISS:</b> Q16566	<b>Applications:</b> WB (1:500-2000) <b>Reactivity:</b> Human, Mouse, Rat (predicted: Pig, Cow, Dog, Horse) <b>Predicted MW.:</b> 55 kDa <b>Subcellular Location:</b> Cytoplasm ,Nucleus
---	---	--

**— VALIDATION IMAGES —**

Sample: Lane 1: Thymus (Mouse) Lysate at 40 ug  
 Lane 2: Testis (Mouse) Lysate at 40 ug Primary:  
 Anti-CAMK4 (bs-6727R) at 1/1000 dilution  
 Secondary: IRDye800CW Goat Anti-Rabbit IgG at  
 1/20000 dilution Predicted band size: 55 kD  
 Observed band size: 50 kD

**— SELECTED CITATIONS —**

- **[IF=4.12]** Zuo et al. Alcohol amplifies ketamine-induced apoptosis in primary cultured cortical neurons and PC12 cells through down-regulating CREB-related signaling pathways. (2017) Sci.Rep. 7:10523 WB ;Rat. 28874724
- **[IF=4.3]** Qinbing Xue. et al. Lycorine (Lycoris radiata)—a unique natural medicine on breast cancer. J CELL MOL MED. 2024 Aug;28(16):e70032 WB ;Human. 39175104
- **[IF=4.4]** Kai Tang. et al.Neoandrographolide inhibits mature osteoclast differentiation to alleviate bone loss and treat osteoporosis.FRONTIERS IN PHARMACOLOGY.2025 Feb 11;16:1466057. Western Blot ;Mouse. 40008134
- **[IF=3.173]** Zuo D et al. Alcohol aggravates ketamine-induced behavioral, morphological and neurochemical alterations in adolescent rats: The involvement of CREB-related pathways.Behav Brain Res. 2018 Sep 3;349:80-90. WB ;Rat. 29738804