

bs-6723R**[Primary Antibody]****PNPLA6/NTE Rabbit pAb****BioSS**
ANTIBODIES

www.bioss.com.cn

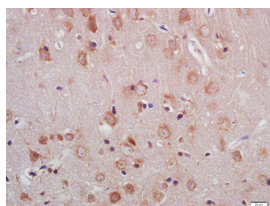
sales@bioss.com.cn

techsupport@bioss.com.cn

400-901-9800

— DATASHEET —

Host: Rabbit Clonality: Polyclonal GeneID: 10908 Target: PNPLA6/NTE Immunogen: KLH conjugated synthetic peptide derived from human PNPLA6: 74-170/1366. Purification: affinity purified by Protein A Concentration: 1mg/ml	Isotype: IgG SWISS: Q8IY17 Applications: IHC-P (1:100-500) IHC-F (1:100-500) IF (1:100-500) Reactivity: Rat (predicted: Human, Mouse, Pig, Cow, Chicken, Dog, Horse) Predicted MW.: 150 kDa
Storage: 0.01M TBS (pH7.4) with 1% BSA, 0.02% Proclin300 and 50% Glycerol. Shipped at 4°C. Store at -20°C for one year. Avoid repeated freeze/thaw cycles. Background: Phospholipase B that deacylates intracellular phosphatidylcholine (PtdCho), generating glycerophosphocholine (GroPtdCho). This deacylation occurs at both sn-2 and sn-1 positions of PtdCho. Its specific chemical modification by certain organophosphorus (OP) compounds leads to distal axonopathy. Tissue specificity; Expressed in brain, placenta, kidney, neuron and skeletal muscle. Involvement in disease Defects in PNPLA6 are the cause of spastic paraplegia autosomal recessive type 39 (SPG39) ; also known as NTE-related motor neuron disorder (NTEMND). Spastic paraplegia is a neurodegenerative disorder characterized by a slow, gradual, progressive weakness and spasticity of the lower limbs. Rate of progression and the severity of symptoms are quite variable. Initial symptoms may include difficulty with balance, weakness and stiffness in the legs, muscle spasms, and dragging the toes when walking. In some forms of the disorder, bladder symptoms (such as incontinence) may appear, or the weakness and stiffness may spread to other parts of the body. SPG39 is associated with a motor axonopathy affecting upper and lower limbs and resulting in progressive wasting of distal upper and lower extremity muscles.	Subcellular Location: Cell membrane ,Cytoplasm

— VALIDATION IMAGES —

Tissue/cell: rat brain tissue; 4% Paraformaldehyde-fixed and paraffin-embedded; Antigen retrieval: citrate buffer (0.01M, pH 6.0), Boiling bathing for 15min; Block endogenous peroxidase by 3% Hydrogen peroxide for 30min; Blocking buffer (normal goat serum, C-0005) at 37°C for 20 min; Incubation: Anti-PNPLA6 Polyclonal Antibody, Unconjugated (bs-6723R) 1:200, overnight at 4°C, followed by conjugation to the secondary antibody (SP-0023) and DAB (C-0010) staining