

**bs-9906R****[ Primary Antibody ]****CRHBP Rabbit pAb****Bioss**  
ANTIBODIES

www.bioss.com.cn

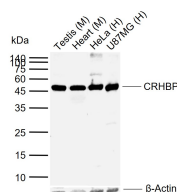
sales@bioss.com.cn

techsupport@bioss.com.cn

400-901-9800

**— DATASHEET —**

<b>Host:</b> Rabbit	<b>Isotype:</b> IgG	<b>Applications:</b> WB (1:500-2000)
<b>Clonality:</b> Polyclonal		<b>Reactivity:</b> Human, Mouse, Rat (predicted: Rabbit, Pig, Sheep, Cow, Chicken, Dog, Horse)
<b>GeneID:</b> 1393	<b>SWISS:</b> P24387	<b>Predicted MW.:</b> 33 kDa
<b>Target:</b> CRHBP		<b>Subcellular Location:</b> Secreted
<b>Immunogen:</b> KLH conjugated synthetic peptide derived from human CRHBP: 71-170/322.		
<b>Purification:</b> affinity purified by Protein A		
<b>Concentration:</b> 1mg/ml		
<b>Storage:</b> 0.01M TBS (pH7.4) with 1% BSA, 0.02% Proclin300 and 50% Glycerol. Shipped at 4°C. Store at -20°C for one year. Avoid repeated freeze/thaw cycles.		
<b>Background:</b> CRHBP is a potent stimulator of synthesis and secretion of preopiomelanocortin derived peptides. Although CRH concentrations in the human peripheral circulation are normally low, they increase throughout pregnancy and fall rapidly after parturition. Maternal plasma CRH probably originates from the placenta. Human plasma contains a CRH binding protein which inactivates CRH and which may prevent inappropriate pituitary adrenal stimulation in pregnancy.		

**— VALIDATION IMAGES —**

Sample: Lane 1: Mouse Testis tissue lysates Lane 2: Mouse Heart tissue lysates Lane 3: Human HeLa cell lysates Lane 4: Human U87MG cell lysates Primary: Anti-CRHBP (bs-9906R) at 1/1000 dilution Secondary: IRDye800CW Goat Anti-Rabbit IgG at 1/20000 dilution Predicted band size: 33 kDa Observed band size: 45 kDa