

**bs-19535R**

**[ Primary Antibody ]**

## ZNF707 Rabbit pAb

**Bioss**  
ANTIBODIES

www.bioss.com.cn

sales@bioss.com.cn

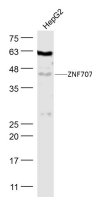
techsupport@bioss.com.cn

400-901-9800

### — DATASHEET —

<b>Host:</b> Rabbit	<b>Isotype:</b> IgG	<b>Applications:</b> WB (1:500-2000)
<b>Clonality:</b> Polyclonal		
<b>GeneID:</b> 286075	<b>SWISS:</b> Q96C28	
<b>Target:</b> ZNF707		
<b>Immunogen:</b> KLH conjugated synthetic peptide derived from human ZNF707: 201-300/371.		
<b>Purification:</b> affinity purified by Protein A		<b>Reactivity:</b> Human (predicted: Mouse)
<b>Concentration:</b> 1mg/ml		
<b>Storage:</b> 0.01M TBS (pH7.4) with 1% BSA, 0.02% Proclin300 and 50% Glycerol. Shipped at 4°C. Store at -20°C for one year. Avoid repeated freeze/thaw cycles.		<b>Predicted MW.:</b> 43 kDa
<b>Background:</b> ZNF707 belongs to the krueppel C2H2 type zinc finger protein family. It contains 7 C2H2 type zinc fingers and 1 KRAB domain. It may be involved in transcriptional regulation.		<b>Subcellular Location:</b> Nucleus

### — VALIDATION IMAGES —



Sample: HepG2(Human) Cell Lysate at 30 ug  
Primary: Anti-ZNF707 (bs-19535R) at 1/300  
dilution Secondary: IRDye800CW Goat Anti-  
Rabbit IgG at 1/20000 dilution Predicted band  
size: 43 kD Observed band size: 43 kD