

bs-19533R**[Primary Antibody]****ZNF670 Rabbit pAb****Bioss**
ANTIBODIES

www.bioss.com.cn

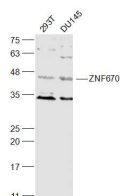
sales@bioss.com.cn

techsupport@bioss.com.cn

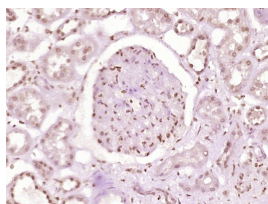
400-901-9800

— DATASHEET —

Host: Rabbit	Isotype: IgG	Applications: WB (1:500-2000)
Clonality: Polyclonal		IHC-P (1:100-500)
GeneID: 93474	SWISS: Q9BS34	IHC-F (1:100-500)
Target: ZNF670		IF (1:100-500)
Immunogen: KLH conjugated synthetic peptide derived from human ZNF670: 1-100/389.		Reactivity: Human
Purification: affinity purified by Protein A		
Concentration: 1mg/ml		Predicted MW.: 45 kDa
Storage: 0.01M TBS (pH7.4) with 1% BSA, 0.02% Proclin300 and 50% Glycerol. Shipped at 4°C. Store at -20°C for one year. Avoid repeated freeze/thaw cycles.		Subcellular Location: Nucleus
Background: ZNF670 (Zinc Finger Protein 670) is a Protein Coding gene. Diseases associated with ZNF670 include Vitreous Disease. Among its related pathways are Gene Expression. GO annotations related to this gene include nucleic acid binding. An important paralog of this gene is ZNF627.		

— VALIDATION IMAGES —

Sample: 293T(Human) Cell Lysate at 30 ug
DU145(Human) Cell Lysate at 30 ug Primary:
Anti-ZNF670 (bs-19533R) at 1/1000 dilution
Secondary: IRDye800CW Goat Anti-Rabbit IgG at
1/20000 dilution Predicted band size: 45 kD
Observed band size: 45 kD



Paraformaldehyde-fixed, paraffin embedded
(Human kidney tissue); Antigen retrieval by
boiling in sodium citrate buffer (pH6.0) for
15min; Block endogenous peroxidase by 3%
hydrogen peroxide for 20 minutes; Blocking
buffer (normal goat serum) at 37°C for 30min;
Antibody incubation with (ZNF670) Polyclonal
Antibody, Unconjugated (bs-19533R) at 1:400
overnight at 4°C, followed by operating
according to SP Kit(Rabbit) (sp-0023)
instructions and DAB staining.