

bs-6500R**[Primary Antibody]****GABA A Receptor alpha 3 Rabbit pAb****Bioss**
ANTIBODIES

www.bioss.com.cn

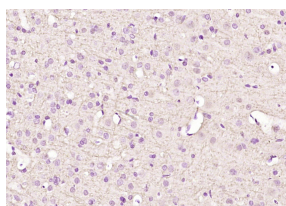
sales@bioss.com.cn

techsupport@bioss.com.cn

400-901-9800

— DATASHEET —

Host: Rabbit	Isotype: IgG	Applications: IHC-P (1:100-500) IHC-F (1:100-500) IF (1:50-200)
Clonality: Polyclonal		
GeneID: 2556	SWISS: P34903	
Target: GABA A Receptor alpha 3		Reactivity: Rat (predicted: Human, Mouse, Rabbit, Sheep, Cow, Dog, Horse)
Immunogen: KLH conjugated synthetic peptide derived from human GABRA3: 101-200/492. < Extracellular >		
Purification: affinity purified by Protein A		Predicted MW.: 52 kDa
Concentration: 1mg/ml		Subcellular Location: Cell membrane
Storage: 0.01M TBS (pH7.4) with 1% BSA, 0.02% Proclin300 and 50% Glycerol. Shipped at 4°C. Store at -20°C for one year. Avoid repeated freeze/thaw cycles.		
Background: GABA, the major inhibitory neurotransmitter in the vertebrate brain, mediates neuronal inhibition by binding to the GABA/benzodiazepine receptor and opening an integral chloride channel.		

— VALIDATION IMAGES —

Paraformaldehyde-fixed, paraffin embedded (rat brain); Antigen retrieval by boiling in sodium citrate buffer (pH6.0) for 15min; Block endogenous peroxidase by 3% hydrogen peroxide for 20 minutes; Blocking buffer (normal goat serum) at 37°C for 30min; Antibody incubation with (GABA A Receptor alpha 3) Polyclonal Antibody, Unconjugated (bs-6500R) at 1:200 overnight at 4°C, followed by operating according to SP Kit(Rabbit) (sp-0023) instructions and DAB staining.