

**bs-13076R****[ Primary Antibody ]****ENPP6 Rabbit pAb****BioSS**  
**ANTIBODIES**

www.bioss.com.cn

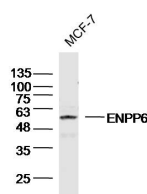
sales@bioss.com.cn

techsupport@bioss.com.cn

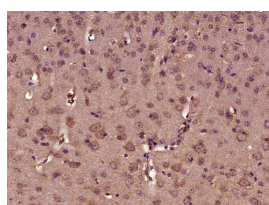
400-901-9800

**— DATASHEET —**

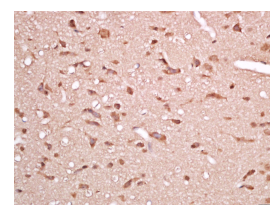
<b>Host:</b> Rabbit	<b>Isotype:</b> IgG	<b>Applications:</b> <b>WB</b> (1:500-2000)
<b>Clonality:</b> Polyclonal		<b>IHC-P</b> (1:100-500)
<b>GeneID:</b> 133121	<b>SWISS:</b> Q6UWR7	<b>IHC-F</b> (1:100-500)
<b>Target:</b> ENPP6		<b>IF</b> (1:100-500)
<b>Immunogen:</b> KLH conjugated synthetic peptide derived from human ENPP6: 251-350/440.		<b>Reactivity:</b> Human, Mouse, Rat (predicted: Pig, Cow, Dog, Horse)
<b>Purification:</b> affinity purified by Protein A		
<b>Concentration:</b> 1mg/ml		<b>Predicted MW.:</b> 46 kDa
<b>Storage:</b> 0.01M TBS (pH7.4) with 1% BSA, 0.02% Proclin300 and 50% Glycerol. Shipped at 4°C. Store at -20°C for one year. Avoid repeated freeze/thaw cycles.		<b>Subcellular Location:</b> Secreted ,Cell membrane
<b>Background:</b> NPP6 is a 440 amino acid member of the nucleotide pyrophosphatase/phosphodiesterase family. NPP6 is a secreted and single-pass type I membrane protein. Predominantly expressed in brain and kidney, NPP6 is a choline-specific glycerophosphodiester phosphodiesterase. NPP6 can hydrolyze the classical substrate for phospholipase C, p-nitrophenyl phosphorylcholine, glycerophosphorylcholine, sphingosylphosphorylcholine and lysophosphatidylcholine (LPC). NPP6 has been found to have a preference for LPC with polyunsaturated or short fatty acids. The gene encoding NPP6 maps to human chromosome 4, which consists of approximately 6% of the human genome and nearly 900 genes. Chromosome 4 is associated with Huntington's disease, FGFR-3, Ellis-van Creveld syndrome, methylmalonic acidemia and polycystic kidney disease.		

**— VALIDATION IMAGES —**

Sample: MCF-7 Cell (Human) Lysate at 40 ug  
 Primary: Anti-ENPP6(bs-13076R) at 1/300 dilution  
 Secondary: IRDye800CW Goat Anti-Rabbit IgG at 1/20000 dilution  
 Predicted band size: 46kD  
 Observed band size: 50kD



Paraformaldehyde-fixed, paraffin embedded (Mouse brain); Antigen retrieval by boiling in sodium citrate buffer (pH6.0) for 15min; Block endogenous peroxidase by 3% hydrogen peroxide for 20 minutes; Blocking buffer (normal goat serum) at 37°C for 30min; Antibody incubation with (ENPP6) Polyclonal Antibody, Unconjugated (bs-13076R) at 1:400 overnight at 4°C, followed by operating according to SP Kit(Rabbit) (sp-0023) instructions and DAB staining.



Tissue/cell: Rat brain tissue; 4% Paraformaldehyde-fixed and paraffin-embedded; Antigen retrieval: citrate buffer (0.01M, pH 6.0), Boiling bathing for 15min; Block endogenous peroxidase by 3% Hydrogen peroxide for 30min; Blocking buffer (normal goat serum, C-0005) at 37°C for 20 min; Incubation: Anti-ENPP6 Polyclonal Antibody, Unconjugated(bs-13076R) 1:500, overnight at 4°C, followed by conjugation to the secondary antibody(SP-0023) and DAB(C-0010) staining