

**bs-13057R****[ Primary Antibody ]****phospho-EEF2 (Thr56 + Thr58) Rabbit pAb****BioSS**  
**ANTIBODIES**

www.bioss.com.cn

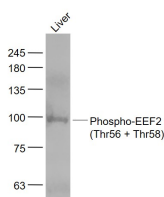
sales@bioss.com.cn

techsupport@bioss.com.cn

400-901-9800

**— DATASHEET —**

<b>Host:</b> Rabbit	<b>Isotype:</b> IgG	<b>Applications:</b> WB (1:500-2000)
<b>Clonality:</b> Polyclonal		<b>Reactivity:</b> Mouse (predicted: Human, Rat)
<b>GeneID:</b> 1938	<b>SWISS:</b> P13639	
<b>Target:</b> EEF2 (Thr56 + Thr58)		<b>Predicted MW.:</b> 95 kDa
<b>Immunogen:</b> KLH conjugated Synthesised phosphopeptide derived from human EEF2 around the phosphorylation site of Thr56+Thr58: RF(p-T)D(p-T)RK.		<b>Subcellular Location:</b> Cytoplasm
<b>Purification:</b> affinity purified by Protein A		
<b>Concentration:</b> 1mg/ml		
<b>Storage:</b> 0.01M TBS (pH7.4) with 1% BSA, 0.02% Proclin300 and 50% Glycerol. Shipped at 4°C. Store at -20°C for one year. Avoid repeated freeze/thaw cycles.		
<b>Background:</b> EEF2 is a member of the GTP-binding translation elongation factor family. This protein is an essential factor for protein synthesis. It promotes the GTP-dependent translocation of the nascent protein chain from the A-site to the P-site of the ribosome. This protein is completely inactivated by EF-2 kinase phosphorylation.		

**— VALIDATION IMAGES —**

Sample: Liver (Mouse) Lysate at 40 ug Primary:  
Anti- Phospho-EEF2 (Thr56 + Thr58) (bs-13057R)  
at 1/1000 dilution Secondary: IRDye800CW Goat  
Anti-Rabbit IgG at 1/20000 dilution Predicted  
band size: 95 kD Observed band size: 95 kD