

bs-2294R**[Primary Antibody]****Ku70 / XRCC6 Rabbit pAb****Bioss**
ANTIBODIES

www.bioss.com.cn

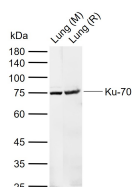
sales@bioss.com.cn

techsupport@bioss.com.cn

400-901-9800

— DATASHEET —

Host: Rabbit	Isotype: IgG	Applications: WB (1:500-2000)
Clonality: Polyclonal		
GeneID: 2547	SWISS: P12956	
Target: Ku70 / XRCC6		
Immunogen: KLH conjugated synthetic peptide derived from human Ku-70: 41-140/609.		
Purification: affinity purified by Protein A		
Concentration: 1mg/ml		Reactivity: Mouse, Rat (predicted: Human, Dog, Horse)
Storage: 0.01M TBS (pH7.4) with 1% BSA, 0.02% Proclin300 and 50% Glycerol. Shipped at 4°C. Store at -20°C for one year. Avoid repeated freeze/thaw cycles.		Predicted MW.: 70 kDa
Background: The p70/p80 autoantigen is a nuclear complex consisting of two subunits with molecular masses of approximately 70 and 80 kDa. The complex functions as a single-stranded DNA-dependent ATP-dependent helicase. The complex may be involved in the repair of nonhomologous DNA ends such as that required for double-strand break repair, transposition, and V(D)J recombination. High levels of autoantibodies to p70 and p80 have been found in some patients with systemic lupus erythematosus. [provided by RefSeq, Jul 2008]		Subcellular Location: Nucleus

— VALIDATION IMAGES —

Sample: Lane 1: Mouse Lung tissue lysates Lane
2: Rat Lung tissue lysates Primary: Anti-Ku-70
(bs-2294R) at 1/1000 dilution Secondary:
IRDye800CW Goat Anti-Rabbit IgG at 1/20000
dilution Predicted band size: 70 kDa Observed
band size: 75 kDa