

bs-13054R**[Primary Antibody]****eEF1A2 Rabbit pAb****BioSS**
ANTIBODIES

www.bioss.com.cn

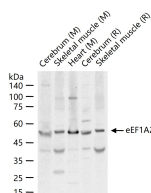
sales@bioss.com.cn

techsupport@bioss.com.cn

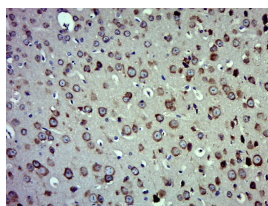
400-901-9800

— DATASHEET —

Host: Rabbit	Isotype: IgG	Applications: WB (1:500-2000)
Clonality: Polyclonal		IHC-P (1:100-500)
GeneID: 1917	SWISS: Q05639	IHC-F (1:100-500)
Target: eEF1A2		IF (1:100-500)
Immunogen: KLH conjugated synthetic peptide derived from human eEF1A2: 1-100/463.		Reactivity: Mouse, Rat (predicted: Human, Zebrafish)
Purification: affinity purified by Protein A		
Concentration: 1mg/ml		Predicted MW.: 50 kDa
Storage: 0.01M TBS (pH7.4) with 1% BSA, 0.02% Proclin300 and 50% Glycerol. Shipped at 4°C. Store at -20°C for one year. Avoid repeated freeze/thaw cycles.		Subcellular Location: Nucleus
Background: Elongation factor 1 alpha 2 (EF-1 alpha2) is a eukaryotic protein translation factor that is expressed in terminally differentiated cells of skeletal muscle, heart, and certain areas of the brain. Along with protein synthesis, EF-1 alpha2 also plays a role in cytoskeletal remodelling and apoptosis. The gene encoding for EF-1 alpha2 maps to chromosome 20q13. Wasted (wst) refers to a spontaneous autosomal recessive mutation in which this gene is deleted, and it leads to tremors and disturbances of gait shortly after weaning, followed by motor neuron degeneration, paralysis, and death by about 28 days in mice. EF-1 alpha2 has the ability to transform mammalian cells and is highly expressed in tumors of the ovary, breast, and lung, thereby proving a good candidate for an oncogene. In addition to this, EF-1 alpha2 enhances focus formation, allows anchorage-independent growth, and decreases the doubling time of rodent fibroblasts.		

— VALIDATION IMAGES —

25 ug total protein per lane of various lysates (see on figure) probed with eEF1A2 polyclonal antibody, unconjugated (bs-13054R) at 1:1000 dilution and 4°C overnight incubation. Followed by conjugated secondary antibody incubation at r.t. for 60 min.



Paraformaldehyde-fixed, paraffin embedded (Mouse brain); Antigen retrieval by boiling in sodium citrate buffer (pH6.0) for 15min; Block endogenous peroxidase by 3% hydrogen peroxide for 20 minutes; Blocking buffer (normal goat serum) at 37°C for 30min; Antibody incubation with (eEF1A2) Polyclonal Antibody, Unconjugated (bs-13054R) at 1:500 overnight at 4°C, followed by a conjugated secondary (sp-0023) for 20 minutes and DAB staining.