

## Recombinant human NSE protein, C-His

Catalog Number: bs-41181P

Concentration: >0.5 mg/ml

AA Seq: 1-434/434

Predicted MW: 48

Detected MW: 48 kDa

Tags: C-His

Activity: Not tested

Endotoxin: Not analyzed

Purity: >95% as determined by SDS-PAGE

Purification: AC

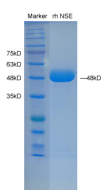
Form: Lyophilized or Liquid

Storage: 20mM Tris-HCl (pH8.0) with 300mM NaCl and 40mM imidazole.

Stored at -70°C or -20°C. Avoid repeated freeze/thaw cycles.

**Background:** This gene encodes one of the three enolase isoenzymes found in mammals. This isoenzyme, a homodimer, is found in mature neurons and cells of neuronal origin. A switch from alpha enolase to gamma enolase occurs in neural tissue during development in rats and primates. [provided by RefSeq, Jul 2008].

### VALIDATION IMAGES



Recombinant NSE 1-434/434(C-6x His-Tag) in SDS-page



The purity of the protein is greater than 90% as determined by reducing SDS-PAGE.