

bs-20325R**[Primary Antibody]****EAAT2 Rabbit pAb****Bioss**
ANTIBODIES

www.bioss.com.cn

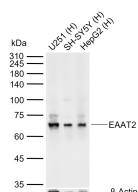
sales@bioss.com.cn

techsupport@bioss.com.cn

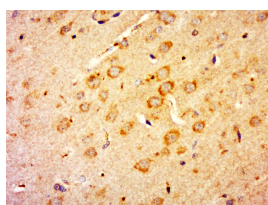
400-901-9800

— DATASHEET —

Host: Rabbit Clonality: Polyclonal GeneID: 6506 Target: EAAT2 Immunogen: KLH conjugated synthetic peptide derived from human EAAT2: 351-450/574. < Extracellular > Purification: affinity purified by Protein A Concentration: 1mg/ml Storage: Preservative: 0.02% Proclin300, Constituents: 1% BSA, 0.01M PBS, pH7.4. Shipped at 4°C. Store at -20°C for one year. Avoid repeated freeze/thaw cycles. Background: This gene encodes a member of a family of solute transporter proteins. The membrane-bound protein is the principal transporter that clears the excitatory neurotransmitter glutamate from the extracellular space at synapses in the central nervous system. Glutamate clearance is necessary for proper synaptic activation and to prevent neuronal damage from excessive activation of glutamate receptors. Mutations in and decreased expression of this protein are associated with amyotrophic lateral sclerosis. Alternatively spliced transcript variants of this gene have been identified. [provided by RefSeq, Sep 2010]	Isotype: IgG SWISS: P43004	Applications: WB (1:500-2000) IHC-P (1:100-500) IHC-F (1:100-500) IF (1:100-500) ICC/IF (1:100) ELISA (1:5000-10000) Reactivity: Human, Rat (predicted: Mouse, Rabbit, Sheep, Cow, Dog, Horse) Predicted MW.: 62 kDa Subcellular Location: Cell membrane
---	---	---

— VALIDATION IMAGES —

Sample: Lane 1: Human U251 cell lysates Lane 2: Human SH-SY5Y cell lysates Lane 3: Human HepG2 cell lysates Primary: Anti-EAAT2 (bs-20325R) at 1/1000 dilution Secondary: IRDye800CW Goat Anti-Rabbit IgG at 1/20000 dilution Predicted band size: 62 kDa Observed band size: 66 kDa



Paraformaldehyde-fixed, paraffin embedded (rat brain); Antigen retrieval by boiling in sodium citrate buffer (pH6.0) for 15min; Block endogenous peroxidase by 3% hydrogen peroxide for 20 minutes; Blocking buffer (normal goat serum) at 37°C for 30min; Antibody incubation with (EAAT2) Polyclonal Antibody, Unconjugated (bs-20325R) at 1:500 overnight at 4°C, followed by a conjugated secondary (sp-0023) for 20 minutes and DAB staining.

— SELECTED CITATIONS —

- **[IF=9.3]** D' Ambrosio Antonella. et al. Proteomic profile of extracellular vesicles from plasma and CSF of multiple sclerosis patients reveals disease activity-associated EAAT2. J NEUROINFLAMM. 2024 Dec;21(1):1-20 WB ;Human. 39223661
- **[IF=3.606]** Yingjiao Liuet al. Exogenous Adenosine Antagonizes Excitatory Amino Acid Toxicity in Primary Astrocytes. Cell Mol Neurobiol . 2020 Jul 6. WB,IF ;rat. 32632892