

**bs-20318R****[ Primary Antibody ]****CXCR4 Rabbit pAb****BioSS**  
**ANTIBODIES**

www.bioss.com.cn

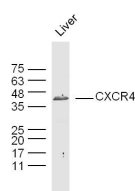
sales@bioss.com.cn

techsupport@bioss.com.cn

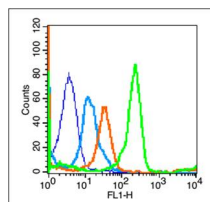
400-901-9800

**— DATASHEET —**

<b>Host:</b> Rabbit <b>Clonality:</b> Polyclonal <b>GeneID:</b> 12767 <b>Target:</b> CXCR4 <b>Immunogen:</b> KLH conjugated synthetic peptide derived from mouse CXCR4: 151-300/359. < Extracellular > <b>Purification:</b> affinity purified by Protein A <b>Concentration:</b> 1mg/ml <b>Storage:</b> Preservative: 0.02% Proclin300, Constituents: 1% BSA, 0.01M PBS, pH7.4. Shipped at 4°C. Store at -20°C for one year. Avoid repeated freeze/thaw cycles. <b>Background:</b> This gene encodes a CXC chemokine receptor specific for stromal cell-derived factor-1. The protein has 7 transmembrane regions and is located on the cell surface. It acts with the CD4 protein to support HIV entry into cells and is also highly expressed in breast cancer cells. Mutations in this gene have been associated with WHIM (warts, hypogammaglobulinemia, infections, and myelokathexis) syndrome. Alternate transcriptional splice variants, encoding different isoforms, have been characterized. Monomer. Can form dimers.	<b>Isotype:</b> IgG  <b>SWISS:</b> P70658	<b>Applications:</b> <b>WB</b> (1:500-2000) <b>Flow-Cyt</b> (3µg/Test)  <b>Reactivity:</b> Mouse (predicted: Rat)  <b>Predicted MW.:</b> 40 kDa  <b>Subcellular Location:</b> Cell membrane
---	---	--

**— VALIDATION IMAGES —**

Sample: liver(mouse) Lysate at 40 ug Primary:  
 Anti-CXCR4(bs-20318R) at 1/300 dilution  
 Secondary: IRDye800CW Goat Anti-Rabbit IgG at  
 1/20000 dilution Predicted band size: 40kD  
 Observed band size: 40kD



Blank control (blue line): Mouse Spleen cells  
 (fixed with 70% methanol (Overnight at 4°C)).  
 Primary Antibody (green line): Rabbit Anti-CXCR4  
 antibody (bs-20318R), Dilution: 3µg/10<sup>6</sup> cells;  
 Isotype Control Antibody (orange line): Rabbit  
 IgG . Secondary Antibody (white blue line): Goat  
 anti-rabbit IgG-FITC

**— SELECTED CITATIONS —**

- **[IF=4.936]** Sung PH et al. Extracorporeal Shock Wave-Supported Adipose-Derived Fresh Stromal Vascular Fraction Preserved Left Ventricular (LV) Function and Inhibited LV Remodeling in Rat. (2018) Oxid Med Cell Longev. 2018 Oct 17:7518920. FCM ;Rat. 30416645