

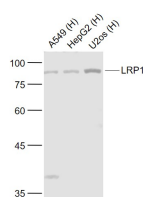
**bs-10920R****[ Primary Antibody ]****LRP1 Rabbit pAb****BioSS**  
**ANTIBODIES**

www.bioss.com.cn

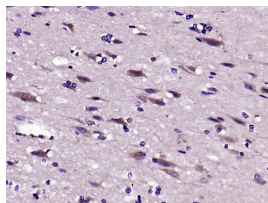
sales@bioss.com.cn

techsupport@bioss.com.cn

400-901-9800

**— DATASHEET —****Host:** Rabbit**Isotype:** IgG**Clonality:** Polyclonal**GeneID:** 4035**SWISS:** Q07954**Target:** LRP1**Immunogen:** KLH conjugated synthetic peptide derived from human LRP1: 2501-2600/4544. < Extracellular >**Purification:** affinity purified by Protein A**Concentration:** 1mg/ml**Storage:** Preservative: 0.02% Proclin300, Constituents: 1% BSA, 0.01M PBS, pH7.4.  
Shipped at 4°C. Store at -20°C for one year. Avoid repeated freeze/thaw cycles.**Background:** This gene encodes a member of the low-density lipoprotein receptor family of proteins. The encoded preproprotein is proteolytically processed by furin to generate 515 kDa and 85 kDa subunits that form the mature receptor (PMID: 8546712). This receptor is involved in several cellular processes, including intracellular signaling, lipid homeostasis, and clearance of apoptotic cells. In addition, the encoded protein is necessary for the alpha 2-macroglobulin-mediated clearance of secreted amyloid precursor protein and beta-amyloid, the main component of amyloid plaques found in Alzheimer patients. Expression of this gene decreases with age and has been found to be lower than controls in brain tissue from Alzheimer's disease patients. [provided by RefSeq, Oct 2015]**Applications:** WB (1:500-2000)**IHC-P** (1:100-500)**IHC-F** (1:100-500)**IF** (1:100-500)**Reactivity:** Human (predicted: Rabbit, Pig, Sheep, Cow, Dog)**Predicted MW.:** 85/515 kDa**Subcellular Location:** Cell membrane ,Cytoplasm ,Nucleus**— VALIDATION IMAGES —**

Sample: Lane 1: A549 (Human) Cell Lysate at 30 ug  
 Lane 2: HepG2 (Human) Cell Lysate at 30 ug  
 Lane 3: U2OS (Human) Cell Lysate at 30 ug  
 Primary: Anti-LRP1 (bs-10920R) at 1/1000  
 dilution Secondary: IRDye800CW Goat Anti-Rabbit IgG at 1/20000 dilution Predicted band size: 85 kD Observed band size: 85 kD



Paraformaldehyde-fixed, paraffin embedded (human brain); Antigen retrieval by boiling in sodium citrate buffer (pH6.0) for 15min; Block endogenous peroxidase by 3% hydrogen peroxide for 20 minutes; Blocking buffer (normal goat serum) at 37°C for 30min; Antibody incubation with (LRP1) Polyclonal Antibody, Unconjugated (bs-10920R) at 1:200 overnight at 4°C, followed by operating according to SP Kit(Rabbit) (sp-0023) instructions and DAB staining.