

bs-19524R

[Primary Antibody]

ZNF571 Rabbit pAb

BioSS
ANTIBODIES

www.bioss.com.cn

sales@bioss.com.cn

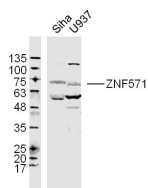
techsupport@bioss.com.cn

400-901-9800

— DATASHEET —

Host: Rabbit	Isotype: IgG	Applications: WB (1:500-2000)
Clonality: Polyclonal		
GeneID: 51276	SWISS: Q7Z3V5	
Target: ZNF571		
Immunogen: KLH conjugated synthetic peptide derived from human ZNF571: 181-280/609.		
Purification: affinity purified by Protein A		Reactivity: Human
Concentration: 1mg/ml		
Storage: 0.01M TBS (pH7.4) with 1% BSA, 0.02% Proclin300 and 50% Glycerol. Shipped at 4°C. Store at -20°C for one year. Avoid repeated freeze/thaw cycles.		Predicted MW.: 74 kDa
		Subcellular Location: Nucleus

— VALIDATION IMAGES —



Sample: SiHa Cell (Human) Lysate at 30 ug U937
Cell(Human)Lysate at 30 ug Primary: Anti-
ZNF571 (bs-19524R)at 1/300 dilution Secondary:
IRDye800CW Goat Anti-Rabbit IgG at 1/20000
dilution Predicted band size: 74 kD Observed
band size: 74 kD