

bs-1004R**[Primary Antibody]****Bioss**
ANTIBODIES

www.bioss.com.cn

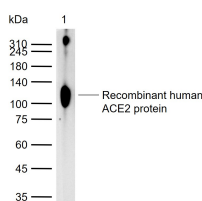
sales@bioss.com.cn

techsupport@bioss.com.cn

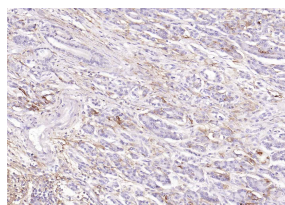
400-901-9800

ACE2 Rabbit pAb**— DATASHEET —**

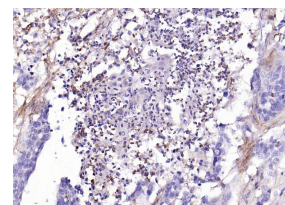
Host: Rabbit Clonality: Polyclonal GeneID: 59272 Target: ACE2 Immunogen: KLH conjugated synthetic peptide derived from human ACE2: 601-700/805. < Extracellular > Purification: affinity purified by Protein A Concentration: 1mg/ml Storage: 0.01M TBS (pH7.4) with 1% BSA, 0.02% Proclin300 and 50% Glycerol. Shipped at 4°C. Store at -20°C for one year. Avoid repeated freeze/thaw cycles. Background: The protein encoded by this gene belongs to the angiotensin-converting enzyme family of dipeptidyl carboxydipeptidases and has considerable homology to human angiotensin 1 converting enzyme. This secreted protein catalyzes the cleavage of angiotensin I into angiotensin 1-9, and angiotensin II into the vasodilator angiotensin 1-7. The organ- and cell-specific expression of this gene suggests that it may play a role in the regulation of cardiovascular and renal function, as well as fertility. In addition, the encoded protein is a functional receptor for the spike glycoprotein of the human coronaviruses SARS and HCoV-NL63. [provided by RefSeq, Jul 2008]	Isotype: IgG SWISS: Q9BYF1	Applications: WB (1:500-2000) IHC-P (1:400-800) IHC-F (1:400-800) IF (1:100-500) Reactivity: Human Predicted MW.: 87 kDa Subcellular Location: Cytoplasm ,Cell projection ,Membrane ,Secreted ,Cell membrane
--	---	--

— VALIDATION IMAGES —

Sample: Lane 1: Recombinant human ACE2 protein, His & Avi (HEK293)(bs-46001P) Primary: Anti-ACE2 (bs-1004R) at 1/1000 dilution
Secondary: IRDye800CW Goat Anti-Rabbit IgG at 1/20000 dilution Predicted band size: 87 kDa
Observed band size: 110 kDa



Paraformaldehyde-fixed, paraffin embedded Human Pancreatic Cancer; Antigen retrieval by boiling in sodium citrate buffer (pH6.0) for 15 min; Antibody incubation with ACE2 Polyclonal Antibody, Unconjugated (bs-1004R) at 1:200 overnight at 4°C, followed by conjugation to the SP Kit (Rabbit, SP-0023) and DAB (C-0010) staining.



Paraformaldehyde-fixed, paraffin embedded Human Esophageal Cancer; Antigen retrieval by boiling in sodium citrate buffer (pH6.0) for 15 min; Antibody incubation with ACE2 Polyclonal Antibody, Unconjugated (bs-1004R) at 1:200 overnight at 4°C, followed by conjugation to the SP Kit (Rabbit, SP-0023) and DAB (C-0010) staining.

— SELECTED CITATIONS —

- **[IF=11.4]** Hanjie Yu. et al. Key β 1-4 galactosylated glycan receptors of SARS-CoV-2 and its inhibitor from the galactosylated glycoproteins of bovine milk. J ADV RES. 2024 Dec;: IF ;. 39667665
- **[IF=8.3]** Li Zhang. et al. Promoting Drug Delivery to the Brain by Modulating the Transcytosis Process across the Blood-Brain Barrier. ACS APPL MATER INTER. 2025;XXXX(XXX):XXX-XXX WB ;Human. 40179275
- **[IF=6.548]** Mercado-Gómez, Maria. et al. The spike of SARS-CoV-2 promotes metabolic rewiring in hepatocytes. COMMUN BIOL. 2022 Aug;5(1):1-13 WB ;Human,Mouse,Monkey. 35978143
- **[IF=6.6]** Virginia Lotti. et al. CFTR Modulation Reduces SARS-CoV-2 Infection in Human Bronchial Epithelial Cells. CELLS-

Important Note: This product as supplied is intended for research use only, not for use in human, therapeutic or diagnostic applications.

BASEL. 2022 Jan;11(8):1347 FCM ;Human. 35456026

- **[IF=6.6]** Dolaji Henin. et al. Morphological and Immunopathological Aspects of Lingual Tissues in COVID-19. CELLS-BASEL. Cells-Basel. 2022 Jan;11(7):1248 IHC ;Human. 35406811