

**bs-22473R****[ Primary Antibody ]****HBZ Rabbit pAb****Bioss**  
ANTIBODIES

www.bioss.com.cn

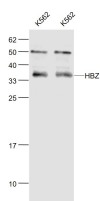
sales@bioss.com.cn

techsupport@bioss.com.cn

400-901-9800

**— DATASHEET —**

<b>Host:</b> Rabbit	<b>Isotype:</b> IgG	<b>Applications:</b> WB (1:500-2000)
<b>Clonality:</b> Polyclonal		<b>Reactivity:</b> Human
<b>GeneID:</b> 3050	<b>SWISS:</b> P02008	
<b>Target:</b> HBZ		
<b>Immunogen:</b> KLH conjugated synthetic peptide derived from human HBZ: 1-100/142.		<b>Predicted MW.:</b> 16 kDa
<b>Purification:</b> affinity purified by Protein A		<b>Subcellular Location:</b> Secreted ,Extracellular
<b>Concentration:</b> 1mg/ml		<b>Location:</b> matrix ,Cytoplasm
<b>Storage:</b> 0.01M TBS (pH7.4) with 1% BSA, 0.02% Proclin300 and 50% Glycerol. Shipped at 4°C. Store at -20°C for one year. Avoid repeated freeze/thaw cycles.		
<b>Background:</b> Zeta-globin is an alpha-like hemoglobin. The zeta-globin polypeptide is synthesized in the yolk sac of the early embryo, while alpha-globin is produced throughout fetal and adult life. The zeta-globin gene is a member of the human alpha-globin gene cluster that includes five functional genes and two pseudogenes. The order of genes is: 5' - zeta - pseudozeta - mu - pseudoalpha-1 - alpha-2 -alpha-1 - theta1 - 3'. [provided by RefSeq, Nov 2009].		

**— VALIDATION IMAGES —**

Sample: K562(Human) Cell Lysate at 30 ug  
K562(Human) Cell Lysate at 30 ug Primary: Anti-HBZ (bs-22473R) at 1/1000 dilution Secondary: IRDye800CW Goat Anti-Rabbit IgG at 1/20000 dilution Predicted band size: 16/35 kD Observed band size: 35 kD