

Recombinant human S100B protein, N-His

Catalog Number: bs-41191P

Concentration: >0.5 mg/ml

AA Seq: 2-92/92

Predicted MW: 11.4

Detected MW: 11 kDa

Tags: N-His

Activity: Not tested

Endotoxin: Not analyzed

Purity: >95% as determined by SDS-PAGE

Purification: AC

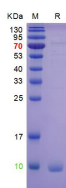
Form: Lyophilized or Liquid

Storage: 20mM Tris-HCl (pH=8.0) with 150mM NaCl, 10% Glycerol

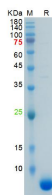
Stored at -70°C or -20°C. Avoid repeated freeze/thaw cycles.

Background: S100 beta is a member of the S100 family of proteins containing 2 EF-hand calcium binding motifs. S100 proteins are localized in the cytoplasm and/or nucleus of a wide range of cells, and involved in the regulation of a number of cellular processes such as cell cycle progression and differentiation. S100 genes include at least 13 members which are located as a cluster on chromosome 1q21; however, this gene is located at 21q22.3. This protein may function in neurite extension, proliferation of melanoma cells, stimulation of Ca²⁺ fluxes, inhibition of PKC mediated phosphorylation, astrocytosis and axonal proliferation, and inhibition of microtubule assembly. Chromosomal rearrangements and altered expression of this gene have been implicated in several neurological, neoplastic, and other types of diseases, including Alzheimer's disease, Down's syndrome, epilepsy, amyotrophic lateral sclerosis, melanoma, and type I diabetes.

VALIDATION IMAGES



The purity of the protein is greater than 90% as determined by reducing SDS-PAGE.



The purity of the protein is greater than 90% as determined by reducing SDS-PAGE.

PRODUCT SPECIFIC PUBLICATIONS

[IF=9.965] Wei-Bin Wang. et al. An anisotropic nanobox based core-shell-satellite nanoassembly of multiple SERS enhancement with heterogeneous interface for stroke marker determination. J COLLOID INTERF SCI. 2023 May;; Other ; . 37245272