

bs-3591R**[Primary Antibody]****MAP3K8 Rabbit pAb****BioSS**
ANTIBODIES

www.bioss.com.cn

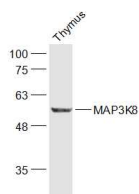
sales@bioss.com.cn

techsupport@bioss.com.cn

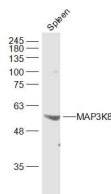
400-901-9800

— DATASHEET —

| | | |
|--|----------------------|--|
| Host: Rabbit | Isotype: IgG | Applications: WB (1:500-2000) |
| Clonality: Polyclonal | | Reactivity: Mouse (predicted: Human, Rat, Rabbit, Cow, Chicken, Dog, Horse) |
| GeneID: 1326 | SWISS: P41279 | Predicted MW.: 53 kDa |
| Target: MAP3K8 | | Subcellular Location: Cytoplasm |
| Immunogen: KLH conjugated synthetic peptide derived from human MAP3K8/TPL2: 121-220/468. | | |
| Purification: affinity purified by Protein A | | |
| Concentration: 1mg/ml | | |
| Storage: 0.01M TBS (pH7.4) with 1% BSA, 0.02% Proclin300 and 50% Glycerol. Shipped at 4°C. Store at -20°C for one year. Avoid repeated freeze/thaw cycles. | | |
| Background: This gene is an oncogene that encodes a member of the serine/threonine protein kinase family. The encoded protein localizes to the cytoplasm and can activate both the MAP kinase and JNK kinase pathways. This protein was shown to activate IkkappaB kinases, and thus induce the nuclear production of NF-kappaB. This protein was also found to promote the production of TNF-alpha and IL-2 during T lymphocyte activation. This gene may also utilize a downstream in-frame translation start codon, and thus produce an isoform containing a shorter N-terminus. The shorter isoform has been shown to display weaker transforming activity. Alternate splicing results in multiple transcript variants that encode the same protein. [provided by RefSeq, Sep 2011] | | |

— VALIDATION IMAGES —

Sample: Thymus (Mouse) Lysate at 40 ug
Primary: Anti-MAP3K8 (bs-3591R) at 1/1000 dilution
Secondary: IRDye800CW Goat Anti-Rabbit IgG at 1/20000 dilution
Predicted band size: 53 kD
Observed band size: 53 kD



Sample: Spleen (Mouse) Lysate at 40 ug
Primary: Anti-MAP3K8 (bs-3591R) at 1/1000 dilution
Secondary: IRDye800CW Goat Anti-Rabbit IgG at 1/20000 dilution
Predicted band size: 53 kD
Observed band size: 53 kD