

bsm-33357M**[Primary Antibody]****phospho-Smad3 (Ser425) Mouse mAb****BioSS**
ANTIBODIES

www.bioss.com.cn

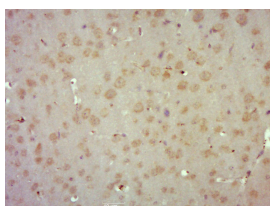
sales@bioss.com.cn

techsupport@bioss.com.cn

400-901-9800

— DATASHEET —

| | | |
|--|----------------------|--|
| Host: Mouse | Isotype: IgG | Applications: IHC-P (1:100-500) IHC-F (1:100-500) IF (1:100-500) Reactivity: Mouse (predicted: Human, Rat) Predicted MW.: 47 kDa Subcellular Location: Cytoplasm ,Nucleus |
| Clonality: Monoclonal | CloneNo.: 3E8 | |
| GeneID: 4088 | SWISS: P84022 | |
| Target: Smad3 (Ser425) | | |
| Immunogen: KLH conjugated Synthesised phosphopeptide derived from human Smad3 around the phosphorylation site of Ser425: SV(p-S). | | |
| Purification: affinity purified by Protein G | | |
| Concentration: 1mg/ml | | |
| Storage: Size : 50ul/100ul/200ul 0.01M TBS (pH7.4) with 1% BSA, 0.02% Proclin300 and 50% Glycerol. Size : 200ug (PBS only) 0.01M PBS Shipped at 4°C. Store at -20°C for one year. Avoid repeated freeze/thaw cycles. | | |
| Background: Smad3 is a 50 kDa member of a family of proteins that act as key mediators of TGF beta superfamily signaling in cell proliferation, differentiation and development. The Smad family is divided into three subclasses: receptor regulated Smads, activin/TGF beta receptor regulated (Smad2 and 3) or BMP receptor regulated (Smad 1, 5, and 8); the common partner, (Smad4) that functions via its interaction to the various Smads; and the inhibitory Smads, (Smad6 and 7). Activated Smad3 oligomerizes with Smad4 upon TGF beta stimulation and translocates as a complex into the nucleus, allowing its binding to DNA and transcription factors. Phosphorylation of the two TGF beta dependent serines 423 and 425 in the C terminus of Smad3 is critical for Smad3 transcriptional activity and TGF beta signaling. | | |

— VALIDATION IMAGES —

Paraformaldehyde-fixed, paraffin embedded (Mouse brain); Antigen retrieval by boiling in sodium citrate buffer (pH6.0) for 15min; Block endogenous peroxidase by 3% hydrogen peroxide for 20 minutes; Blocking buffer (normal goat serum) at 37°C for 30min; Antibody incubation with (Phospho-Smad3 (Ser425)) Polyclonal Antibody, Unconjugated (bsm-33357M-3E8) at 1:500 overnight at 4°C, followed by a conjugated secondary (sp-0023) for 20 minutes and DAB staining.