

bsm-33414M**[Primary Antibody]****BioSS**
ANTIBODIES

www.bioss.com.cn

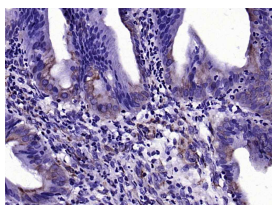
sales@bioss.com.cn

techsupport@bioss.com.cn

400-901-9800

Claudin 2 Mouse mAb**— DATASHEET —**

Host: Mouse	Isotype: IgG	Applications: IHC-P (1:100-500) IHC-F (1:100-500) IF (1:100-500) Reactivity: Human (predicted: Mouse, Rat) Predicted MW.: 25 kDa Subcellular Location: Cell membrane
Clonality: Monoclonal	CloneNo.: 10G2	
GeneID: 9075	SWISS: P57739	
Target: Claudin 2		
Immunogen: KLH conjugated synthetic peptide derived from human Claudin 2: 130-230/230aa.		
Purification: affinity purified by Protein G		
Concentration: 1mg/ml		
Storage: Size : 50ul/100ul/200ul 0.01M TBS (pH7.4) with 1% BSA, 0.02% Proclin300 and 50% Glycerol. Size : 200ug (PBS only) 0.01M PBS Shipped at 4°C. Store at -20°C for one year. Avoid repeated freeze/thaw cycles.		
Background: The claudin superfamily consists of structurally related proteins that are important structural and functional components of tight junctions. Claudin-2, also known as CLDN2 or SP82, is a 230 amino acid multi-pass membrane protein that localizes to the cell junctions and belongs to the claudin superfamily. Able to form homopolymers of heteropolymers with other claudin family members, claudin-2 plays an essential role in mediating calcium-independent cell-adhesion activity that is necessary for tight junction-specific obliteration of the intercellular space. Overexpression of claudin-2 is associated with a variety of diseases, including lung cancer, colorectal cancer, gastrointestinal carcinomas and inflammatory bowel disease, further affirming the importance of claudin-2 in cell adhesion. The gene encoding claudin-2 maps to human chromosome X, which contains nearly 153 million base pairs and houses over 1,000 genes.		

— VALIDATION IMAGES —

Paraformaldehyde-fixed, paraffin embedded (Human gallbladder); Antigen retrieval by boiling in sodium citrate buffer (pH6.0) for 15min; Block endogenous peroxidase by 3% hydrogen peroxide for 20 minutes; Blocking buffer (normal goat serum) at 37°C for 30min; Antibody incubation with (Claudin 2) Monoclonal Antibody, Unconjugated (bsm-33414M) at 1:200 overnight at 4°C, followed by operating according to SP Kit(Mouse)(sp-0024) instructions and DAB staining.