

**bs-7006R****[ Primary Antibody ]****RASD2 Rabbit pAb****Bioss**  
ANTIBODIES

www.bioss.com.cn

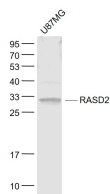
sales@bioss.com.cn

techsupport@bioss.com.cn

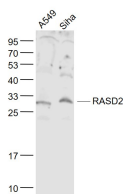
400-901-9800

**— DATASHEET —**

<b>Host:</b> Rabbit	<b>Isotype:</b> IgG	<b>Applications:</b> WB (1:500-2000)
<b>Clonality:</b> Polyclonal		<b>Reactivity:</b> Human (predicted: Mouse, Rat, Rabbit, Dog, Horse)
<b>GeneID:</b> 23551	<b>SWISS:</b> Q96D21	
<b>Target:</b> RASD2		<b>Predicted MW.:</b> 30 kDa
<b>Immunogen:</b> KLH conjugated synthetic peptide derived from human RASD2: 201-266/266.		<b>Subcellular Location:</b> Cell membrane
<b>Purification:</b> affinity purified by Protein A		
<b>Concentration:</b> 1mg/ml		
<b>Storage:</b> 0.01M TBS (pH7.4) with 1% BSA, 0.02% Proclin300 and 50% Glycerol. Shipped at 4°C. Store at -20°C for one year. Avoid repeated freeze/thaw cycles.		
<b>Background:</b> GTPase signaling protein that binds to and hydrolyzes GTP. Regulates signaling pathways involving G-proteins-coupled receptor and heterotrimeric proteins such as GNB1, GNB2 and GNB3. May be involved in selected striatal competencies, mainly locomotor activity and motor coordination.		

**— VALIDATION IMAGES —**

Sample: U87MG(Human) Cell Lysate at 30 ug  
Primary: Anti- RASD2 (bs-7006R) at 1/1000  
dilution Secondary: IRDye800CW Goat Anti-  
Rabbit IgG at 1/20000 dilution Predicted band  
size: 30 kD Observed band size: 30 kD



Sample: A549(Human) Cell Lysate at 30 ug  
SiHa(Human) Cell Lysate at 30 ug Primary: Anti-  
RASD2 (bs-7006R) at 1/1000 dilution Secondary:  
IRDye800CW Goat Anti-Rabbit IgG at 1/20000  
dilution Predicted band size: 30 kD Observed  
band size: 30 kD