

bs-6730R**[Primary Antibody]****Upstream Binding Protein 1 Rabbit pAb****BioSS**
ANTIBODIES

www.bioss.com.cn

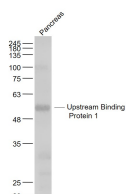
sales@bioss.com.cn

techsupport@bioss.com.cn

400-901-9800

— DATASHEET —

Host: Rabbit	Isotype: IgG	Applications: WB (1:500-2000)
Clonality: Polyclonal		
GeneID: 7342	SWISS: Q86Y57	
Target: Upstream Binding Protein 1		
Immunogen: KLH conjugated synthetic peptide derived from human Upstream Binding Protein 1: 351-450/540.		
Purification: affinity purified by Protein A		
Concentration: 1mg/ml		
Storage: 0.01M TBS (pH7.4) with 1% BSA, 0.02% Proclin300 and 50% Glycerol. Shipped at 4°C. Store at -20°C for one year. Avoid repeated freeze/thaw cycles.		Reactivity: Mouse (predicted: Human, Rat, Pig, Cow, Chicken, Dog, Horse)
Background: Functions as a transcriptional activator in a promoter context-dependent manner. Modulates the placental expression of CYP11A1. Involved in regulation of the alpha-globin gene in erythroid cells. Activation of the alpha-globin promoter in erythroid cells is via synergistic interaction with TFCP2 (By similarity). Involved in regulation of the alpha-globin gene in erythroid cells. Binds strongly to sequences around the HIV-1 initiation site and weakly over the TATA-box. Represses HIV-1 transcription by inhibiting the binding of TFIID to the TATA-box.		Predicted MW.: 60 kDa
		Subcellular Location: Nucleus

— VALIDATION IMAGES —

Sample: Pancreas (Mouse) Lysate at 40 ug
Primary: Anti- Upstream Binding Protein 1
(bs-6730R) at 1/1000 dilution Secondary:
IRDye800CW Goat Anti-Rabbit IgG at 1/20000
dilution Predicted band size: 60 kD Observed
band size: 56 kD