

bs-9354R**[Primary Antibody]****PSMA5 Rabbit pAb****BioSS**
ANTIBODIES

www.bioss.com.cn

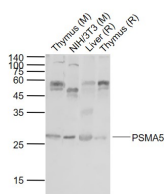
sales@bioss.com.cn

techsupport@bioss.com.cn

400-901-9800

— DATASHEET —

Host: Rabbit	Isotype: IgG	Applications: WB (1:500-2000)
Clonality: Polyclonal		
GeneID: 5686	SWISS: P28066	
Target: PSMA5		
Immunogen: KLH conjugated synthetic peptide derived from human PSMA5: 31-130/241.		
Purification: affinity purified by Protein A		
Concentration: 1mg/ml		
Storage: 0.01M TBS (pH7.4) with 1% BSA, 0.02% Proclin300 and 50% Glycerol. Shipped at 4°C. Store at -20°C for one year. Avoid repeated freeze/thaw cycles.		Reactivity: Mouse, Rat (predicted: Human, Rabbit, Pig, Cow, Chicken)
Background: The proteasome is a multicatalytic proteinase complex which is characterized by its ability to cleave peptides with Arg, Phe, Tyr, Leu, and Glu adjacent to the leaving group at neutral or slightly basic pH. The proteasome has an ATP-dependent proteolytic activity.		Predicted MW.: 26.5 kDa
		Subcellular Location: Cytoplasm ,Nucleus

— VALIDATION IMAGES —

Sample: Lane 1: Thymus (Mouse) Tissue Lysate at 40 ug
Lane 2: NIH/3T3 (Mouse) Cell Lysate at 30 ug
Lane 3: Liver (Rat) Tissue Lysate at 40 ug
Lane 4: Thymus (Rat) Tissue Lysate at 40 ug
Primary: Anti-PSMA5 (bs-9354R) at 1/1000 dilution
Secondary: IRDye800CW Goat Anti-Rabbit IgG at 1/20000 dilution
Predicted band size: 26.5 kD
Observed band size: 27 kD

— SELECTED CITATIONS —

- **[IF=3]** Xin Wang. et al. Knockout of C6orf120 in Rats Alleviates Concanavalin A-induced Autoimmune Hepatitis by Regulating Macrophage Polarization. BIOMED ENVIRON SCI. 2024 Jun 20;37(6):594-606 WB ;Rat. 38988110