

bs-9340R**[Primary Antibody]****MARCH6 Rabbit pAb****BioSS**
ANTIBODIES

www.bioss.com.cn

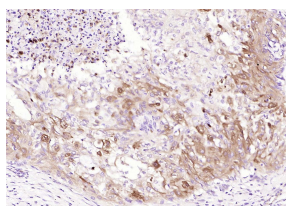
sales@bioss.com.cn

techsupport@bioss.com.cn

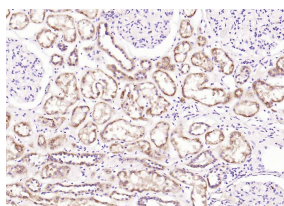
400-901-9800

— DATASHEET —

Host: Rabbit	Isotype: IgG	Applications: IHC-P (1:100-500) IHC-F (1:100-500) IF (1:50-200) Reactivity: Human, Mouse, Rat (predicted: Pig, Sheep, Cow, Zebrafish, Chicken, Dog, Horse) Predicted MW.: 103 kDa Subcellular Location: Cell membrane ,Cytoplasm
Clonality: Polyclonal		
GeneID: 10299	SWISS: O60337	
Target: MARCH6		
Immunogen: KLH conjugated synthetic peptide derived from human MARCH6: 1-100/910.		
Purification: affinity purified by Protein A		
Concentration: 1mg/ml		
Storage: 0.01M TBS (pH7.4) with 1% BSA, 0.02% Proclin300 and 50% Glycerol. Shipped at 4°C. Store at -20°C for one year. Avoid repeated freeze/thaw cycles.		
Background: MARCH6 (Membrane associated RING finger protein 6) belongs to the MARCH family, which contains at least seven membrane associated RING-CH (MARCH)proteins. MARCH proteins are E3 ubiquitin ligases and are located to subcellular membranes.		

— VALIDATION IMAGES —

Paraformaldehyde-fixed, paraffin embedded (human kidney carcinoma); Antigen retrieval by boiling in sodium citrate buffer (pH6.0) for 15min; Block endogenous peroxidase by 3% hydrogen peroxide for 20 minutes; Blocking buffer (normal goat serum) at 37°C for 30min; Antibody incubation with (MARCH6) Polyclonal Antibody, Unconjugated (bs-9340R) at 1:200 overnight at 4°C, followed by operating according to SP Kit(Rabbit) (sp-0023) instructions and DAB staining.



Paraformaldehyde-fixed, paraffin embedded (human kidney); Antigen retrieval by boiling in sodium citrate buffer (pH6.0) for 15min; Block endogenous peroxidase by 3% hydrogen peroxide for 20 minutes; Blocking buffer (normal goat serum) at 37°C for 30min; Antibody incubation with (MARCH6) Polyclonal Antibody, Unconjugated (bs-9340R) at 1:200 overnight at 4°C, followed by operating according to SP Kit(Rabbit) (sp-0023) instructions and DAB staining.