

bs-6688R**[Primary Antibody]****SCN8A/Nav1.6 Rabbit pAb****Bioss**
ANTIBODIES

www.bioss.com.cn

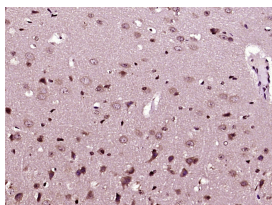
sales@bioss.com.cn

techsupport@bioss.com.cn

400-901-9800

— DATASHEET —

Host: Rabbit	Isotype: IgG	Applications: IHC-P (1:100-500) IHC-F (1:100-500) IF (1:100-500) Reactivity: Mouse (predicted: Human, Rat, Rabbit, Pig, Cow, Dog) Predicted MW.: 220 kDa Subcellular Location: Cytoplasm
Clonality: Polyclonal		
GeneID: 6334	SWISS: Q9UQD0	
Target: SCN8A/Nav1.6		
Immunogen: KLH conjugated synthetic peptide derived from human SCN8A/Nav1.6: 251-314/314.		
Purification: affinity purified by Protein A		
Concentration: 1mg/ml		
Storage: 0.01M TBS (pH7.4) with 1% BSA, 0.02% Proclin300 and 50% Glycerol. Shipped at 4°C. Store at -20°C for one year. Avoid repeated freeze/thaw cycles.		
Background: Mediates the voltage-dependent sodium ion permeability of excitable membranes. Assuming opened or closed conformations in response to the voltage difference across the membrane, the protein forms a sodium-selective channel through which Na(+) ions may pass in accordance with their electrochemical gradient. In macrophages and melanoma cells, isoform 5 may participate in the control of podosome and invadopodia formation.		

— VALIDATION IMAGES —

Paraformaldehyde-fixed, paraffin embedded (Mouse brain); Antigen retrieval by boiling in sodium citrate buffer (pH6.0) for 15min; Block endogenous peroxidase by 3% hydrogen peroxide for 20 minutes; Blocking buffer (normal goat serum) at 37°C for 30min; Antibody incubation with (SCN8A/Nav1.6) Polyclonal Antibody, Unconjugated (bs-6688R) at 1:400 overnight at 4°C, followed by operating according to SP Kit(Rabbit) (sp-0023) instructions and DAB staining.

— SELECTED CITATIONS —

- **[IF=3.309]** Haoran Li. et al. Nav1.6 Promotes the Progression of Human Follicular Thyroid Carcinoma Cells via JAK-STAT Signaling Pathway. PATHOL RES PRACT. 2022 Jun;;153984 WB ;Human. 35753135